



**Looks great. Rides great too!**  
**All bolt on and fully align-able, The DJM way!**

**YOUR ONE STOP SHOP  
 FOR STATIC DROPS**

**Visit us at [djmsuspension.com](http://djmsuspension.com)**



Chris's Classic  
**MUSTANG PARTS  
 AND CRASH PARTS**



'64 1/2 - Present  
 559 Glendale Rd.  
 Wilbraham, MA 01095  
 Hours: M-F 9-8, Sat 9-4  
**413-596-3678**

Email: [chrismustang65classics@charter.net](mailto:chrismustang65classics@charter.net)

Specializing in Pre-70 Ford & Mercury & most other makes



**AUTOMOTIVE  
 COLLECTOR CAR DISMANTLER**

271 N. 7th St.  
 Williams, CA 95987

<http://www.bigmauto.com>  
 e-mail: [bigmauto@colusanet.com](mailto:bigmauto@colusanet.com)

**530-473-2225**  
**FAX 530-473-5999**



CREDIT CARDS ACCEPTED

**Classic Car  
 Audio Solutions!**



The original manufacturer of replacement AM/FM radios for classic cars, trucks and hotrods.  
 Established in 1977.



- The easiest radio to replace your original radio and still have that classic look.
- No cutting of your dash, no trimming the radio, no assembly needed, and no extra parts to buy. Your new radio is complete, ready to install, right out of the box.
- Custom Autosound has four models to choose from to fit over 400 applications. When you order a radio for a '65 Mustang, that is what it will fit, a '65 Mustang.



Licensed by Ford and GM.



**Buy The Original. Ask For  
 Custom Autosound By Name**

For a Dealer near you, go to:  
[customautosoundmfg.com](http://customautosoundmfg.com)  
 or call **800-888-8637**

**BUILDING YOUR OWN  
 HEADERS?**

**WE CARRY EVERYTHING YOU NEED**



- Merge Collectors
- Mandrel Bends
- Header Flanges
- Race Mufflers
- Header Build Kits
- Formed Collectors
- Ceramic Coating

**1-800-290-3920**

See Our How-To Video Series At:  
[www.stainlessheaders.com](http://www.stainlessheaders.com)

**THE CARBURETOR  
 REFACTORY**

Rebuild, rebush American, Japanese & European carburetors  
 Also sell parts including throttle shafts, butterflies, rebuild kits, TPS, Varajet pull-offs, etc.

Email: [info@carbkits.com](mailto:info@carbkits.com)  
 Mail order (UPS) & open shop  
 Mon-Thurs 9:30AM - 4 PM (PST)

815 Harbour Way S #5 • Richmond, CA 94804  
 510-237-1277 • Fax 510-237-2092

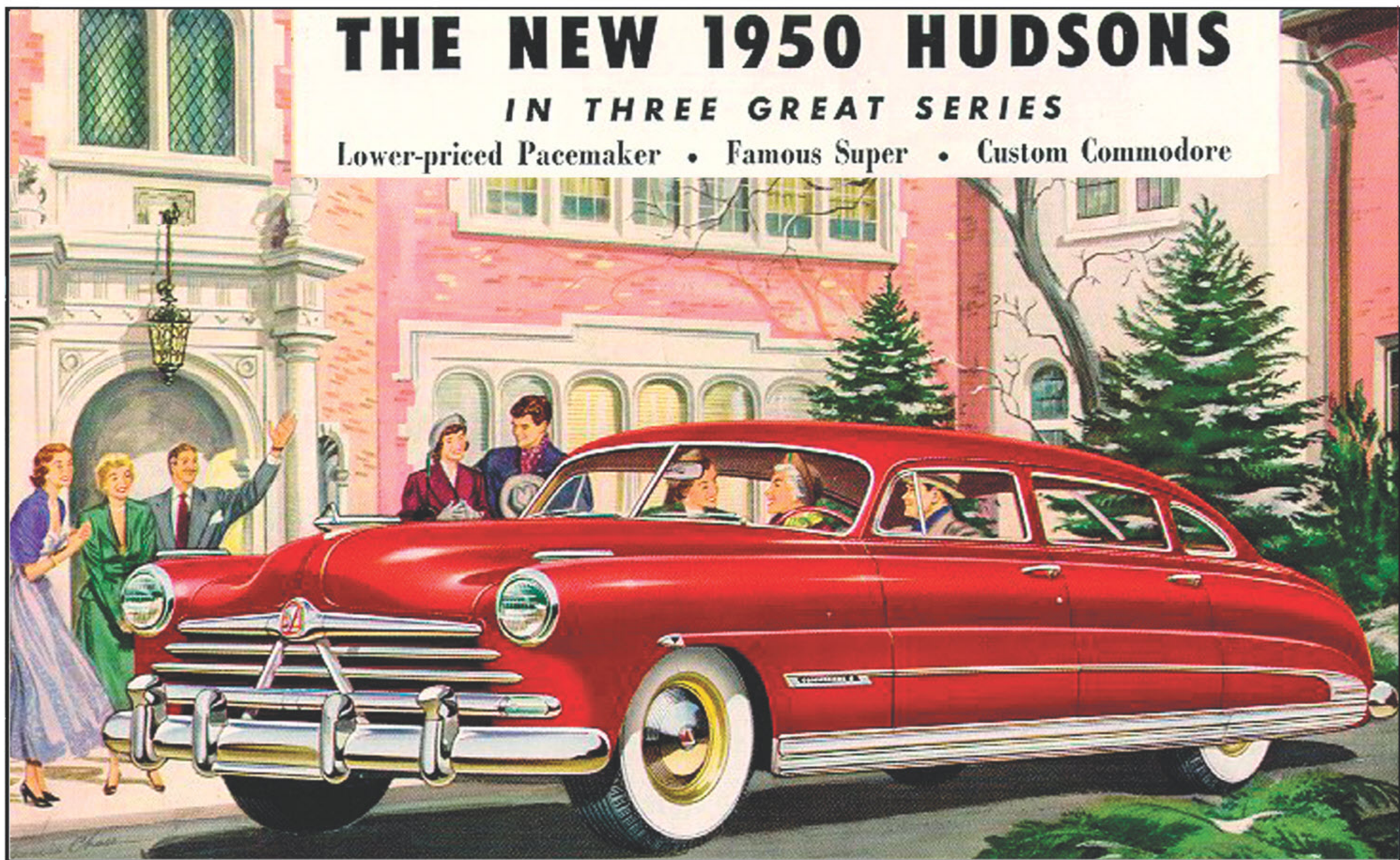
Web site: [www.carbkits.com](http://www.carbkits.com)



# THE NEW 1950 HUDSONS

*IN THREE GREAT SERIES*

Lower-priced Pacemaker • Famous Super • Custom Commodore





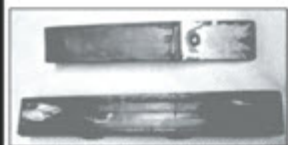
## DIAGNOSING A "SMOKER"

My Experience Is...  
by Joe Rabelskie

\*From 2007, a tribute to our old friend and restorer, Joe Rabelskie.



Although we, at Southern Wheels Magazine, have a diversity of old automobiles, it is no secret to our readers that our preferences are Packards and Buicks; but, every once and a while a car comes along that one just cannot turn away. Such was the case with a '72 280 SE Mercedes Benz. This car was a striking dark green with a light brown interior. It was in really nice shape, the last of the classic body styles; but, it was a smoker!



DAMAGED CHAIN GUIDES

When we pulled the car in, the smoke was so thick that we could not see the house 50 feet away. It was oil smoke; but, there were signs of excess fuel burning too. Being an overhead cam, we knew that the oil was being directed on the top of the camshaft, which in turn was being splashed right on top of the valves. It was possible that it only needed valve seals; although it was smoking so badly that we had our doubts. So, we headed right for the valve seals. This was going to be an easy fix, if it only was the seals. All we had to do was put air into the cylinder, to keep the valves up, and remove the springs. We used an overhead valve spring tool between the camshaft and spring. It worked as if it was made for it. When we got to the fourth valve, we saw that the valve guide was moving up and down with the valve. That was our problem. It is not uncommon for valve guides to fall out of a MB head like that. Fortunately, they make them in oversize. Our easy job just turned into a major project.

When we pulled the car in, the smoke was so thick that we could not see the house 50 feet away. It was oil smoke; but, there were signs of excess fuel burning too. Being an overhead cam, we knew that the oil was being directed on the top of the camshaft, which in turn was being splashed right on top of the valves. It was possible that it only needed valve seals; although it was smoking so badly that we had our doubts. So, we headed right for the valve seals. This was going to be an easy fix, if it only was the seals. All we had to do was put air into the cylinder, to keep the valves up, and remove the springs. We used an overhead valve spring tool between the camshaft and spring. It worked as if it was made for it. When we got to the fourth valve, we saw that the valve guide was moving up and down with the valve. That was our problem. It is not uncommon for valve guides to fall out of a MB head like that. Fortunately, they make them in oversize. Our easy job just turned into a major project.



Using Flat Head Valve Tool To Remove Springs

We put the spring back on and took a compression test. One cylinder was a little low (110 psi), but the rest were right up at 125 psi. We disconnected the accessories and got ready for surgery. After removing the injectors and the intake manifold, we brought the engine to TDC so we could check our timing marks. When we went to the book to see where the timing marks were, there seemed to be everything but that. After consulting several more manuals, we decided to call around. The consensus was that we needed to mark the chain and sprocket, and put it back the same way it came off. So, we marked it and did a little more searching. There was a washer behind each sprocket with a small notch in it. One of them lined up with an unlikely looking mark on the



Marked Chain & Sprocket

head. The other seemed to be off just a little. We snapped a couple of pictures for later reference and with all this in mind, we started disassembling.

First, the timing chain tensioner had to be removed from the outside of the motor, to allow for play in the chain, and then the sprockets were removed and a wire wrapped through the links with the ink marks on them so they could be wired up and out of the way. Then, the sprockets were marked with a punch. The camshafts were secured with five cam tower bolts and five head bolts, so we loosened all of the head bolts reversing the torque pattern, removed them and the tower bolts, and then removed the cams and towers, rocker hold down clips, and rockers. Next, we disconnected the exhaust manifold from the passenger side of the motor and set it off to the side. The driver's side had bolts that were so hard to get to, that we decided to remove the manifold from the exhaust pipe and take the manifold off with the head.

On an OHC Mercedes, the timing chain straddles the chain guides, so, the guides have to be removed. This entails removing two pressed in pins with a special puller. We simply made one by drilling and tapping a soft, fine threaded bolt to fit a 6 mm threaded rod. Then screwed the rod into the pin (which is already threaded), slid a socket and washer over it, and screwed a nut down on it, pulling on the pin, until the pin came out. Finally we were able to pull the heads right off.

Upon disassembly of the head, we found that the valves, springs, rockers, and camshaft were all in good shape. Even the guides that were still tight in the head were in good shape; however, we were not going to take any chances. All of them were going to be replaced with oversized guides. After cleaning the rest of the parts, the block looked good and the rings held vacuum (which was checked with our Sioux vacuum tester). The only parts in question were the chain guides which had slight wear and questionable cracks in them.

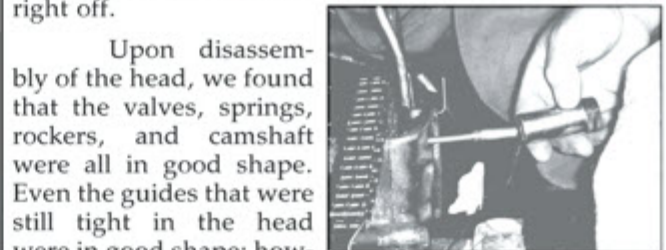
Installing oversized valve guides in a Mercedes involves special tooling. Since this was going to be a one time job, we opted to call on our good friends at Austral Engine Rebuilders in Davie, Florida to install them for us. So we sent out the heads and ordered our parts.

For now, we will be fine cleaning and detailing the engine and compartment and taking care of a few incidentals until we get the heads back and the parts in. Next month we will finish up the machine work, reassemble the engine, and see how it runs. We can hardly wait!

For now, we will be fine cleaning and detailing the engine and compartment and taking care of a few incidentals until we get the heads back and the parts in. Next month we will finish up the machine work, reassemble the engine, and see how it runs. We can hardly wait!

For now, we will be fine cleaning and detailing the engine and compartment and taking care of a few incidentals until we get the heads back and the parts in. Next month we will finish up the machine work, reassemble the engine, and see how it runs. We can hardly wait!

(Part II Next Month!)



Removing Timing Chain Guide Pins



Homemade Tool With Removed Pin

## MUSTANG VILLAGE INC.

NEW AND USED MUSTANG PARTS

All New! Harmonic Balancers  
All New! 289 Manual Trans.  
Flywheel 157 Tooth  
65/69 Billet Aluminum Pulleys  
Crank, Water Pump  
Steering & Alt.

800-310-7915

605 Oak Ct.  
San Bernardino, CA 92410

## FLAT-O-PRODUCTS, INC.

2195 Commercial St. NE  
Salem, OR 97303

503-364-6194

Transmission Adapters for  
Early Ford Motors

## Gaslight Auto Parts

full catalog online or request

1909-48 FORD parts & accessories

knowledgeable people serving you for over 60 years

937.652.2145  
www.gaslightauto.com  
1445 S. Rt. Hwy 68, P.O. Box 291-SW, Urbana, Ohio 43078

## TRANSMISSION PARTS

### CLASSIC & MUSCLE CAR FROM 1946 to 1972

We stock a full line of automatic transmission parts 1946 to date.  
400 • 425 • ST 300 • Power Glide • C4 • C6 • FMX • 727 • 904 • Borg Warner

Shift Kits      Street Stall Converters  
Rebuilding Kits      Stock Converters  
Used Hard Parts      Pumps & Drums  
Cases, Shafts, etc.



TRANSMISSION PARTS

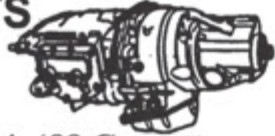
800-524-0485      973-227-2487

Email: fatsco@verizon.net      www.fatsco.com

PO BOX 635, 337 Change Bridge Rd, Pinebrook, NJ 07058



**4 & 5 SPEED  
TRANSMISSION  
PARTS**



- '84- '88 Corvette
- Doug Nash 4+3 O.D.
- Muncie / T-10
- Ford Toploader
- Mopar 833
- Borg Warner T-5

New Complete Transmissions  
Richmond 5 speed  
and T-10 4 Speed Transmissions  
Corvette 4+3 Trans & Parts in Stock

**STRANNY  
& K SHOP, Inc.**

(ask for Brian)

**631-957-9427**

FAX 631-957-1341

88 Otis St., W. Babylon, NY 11704

**CLASSIC  
SHEET METAL**



Manufacturer of New  
**THUNDERBIRD**

SHEET METAL REPAIR PANELS

We also make parts for Galaxies  
classicmetal@earthlink.net

www.classicsheetmetal.com

800-776-4040 • Fax 704-596-3895

4010A Hartley St. • Charlotte, NC 28206

*North Bay*

MUSTANG R-MODEL  
MAVERICK



**Repro/NOS Parts  
& Accessories  
Manufacturer of  
Mustang/Falcon/  
Shelby/Maverick Parts**

**1965-1977**

Stock to Track Products

660 Lakeville St Unit C  
Petaluma, CA 94952

707-971-7152

Info: 925-634-7776

Email: tzcruz@ecis.com

www.deltabaymustangmaverick.com



**Steering Wheel Restoration**

2677 Ritner Highway • Carlisle, PA 17013 • 717-243-5646

E-mail: wheelrest@aol.com www.garyssteeringwheel.com

**PLASTIC AND WOOD STEERING WHEEL RESTORATION**

All Types of Wheels ---Specializing in Wood Grain Wheels, Corvette, GTO,  
AMX, Road Runner, Challenger, Mustang, and Cadillac, Oldsmobile and  
T-Bird Inlay type wheels, etc. Ford, Mustang, Mopar, rim blo  
"DOMESTIC OR FOREIGN"

"Since 1983 - 40 Years in the Business of Just Steering Wheels"

We take your old, faded and cracked plastic or wood steering wheels and restore them to their original,  
or we think, **BETTER CONDITION!!**

**We have a six step process:**

1. We start by fixing all the cracks with an acrylic plastic and then hand sand the wheel to its original shape.
  2. The wheel then receives three coats of a primer surface sealer. It is again checked for any nicks or scratches and is hand sanded.
  3. The wheel then receives a coat of acrylic sealer for color holdout.
  4. The wheel then receives four coats of acrylic urethane to the original color or color of your choice.
  5. After eight hours, the wheel is color sanded and then left to dry a minimum of five days.
  6. The wheel is then hand buffed and polished. It is then packed for shipping and returned to you by U.P.S.
- SPECIAL NOTE:** On wood grain wheels the cracks are repaired and then color toned and finished with three clear coats of acrylic urethane.

A word about our process ---We use what we think are the finest materials available. This provides...

1. Excellent Durability
2. Excellent Color Coverage
3. Very Good Chip and Chemical Resistance

**RESTORATION TAKES APPROXIMATELY 4 TO 8 WEEKS.**

**SATISFACTION GUARANTEED!! SHOW QUALITY WORK**

**NEW • USED • REPOS • REBUILT PARTS**

PAT WILSON'S

**Thunderbird**  
PARTS '58-'66

375 Route 94, Fredon Twp., NJ 07860

www.wilsonbird.com • info@wilsonbird.com

Toll Free Orders: (888) 262-1153 • Information: (973) 579-7205

24-Hour Fax (973) 579-2011

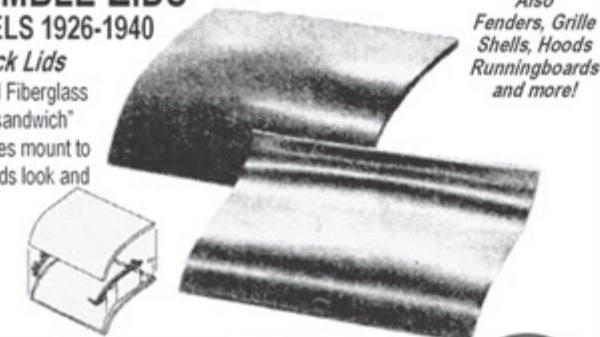
**FIBERGLASS REPLACEMENT PARTS FOR FORDS**

**TRUNK & RUMBLE LIDS**

FOR 15 FORD MODELS 1926-1940

Fiberglass and Steel Deck Lids

Wescott quality hand laminated Fiberglass panels with internal steel in a "sandwich" construction. Hinges and latches mount to steel support structure. Deck lids look and fit like an original.



Also  
Fenders, Grille  
Shells, Hoods  
Runningboards  
and more!

Wescott's Auto Restyling • 19701 SE Hwy 212, Damascus, OR 97089

FAX: 503-658-2938 • INFO: 503-658-3183

1-800-523-6279 • Visa/MC Orders | www.wescottsauto.com



Alternators to replace 6-volt positive-ground generators for flathead Fords

- Magnets • Blower Motors • Wiper Motors
- Various other 6- & 12-volt Motors
- Distributor Rebuilding, Recurving, Converting to Electronic, Rebrushing

**Distributors**

Domestic, Foreign, Industrial and Marine Applications, Plus Flatheads & Magnetos

**NEW!**  
WATER PUMPS  
(USA) 1937 Taper Fit for 60 HP V-8

**503-351-7978**

www.philbingroup.com

**PHILBIN REBUILT PRODUCTS**

9494 SW 62nd Dr, Portland, OR 97219

**1955 - 56 - 57 THUNDERBIRD  
PARTS & RESTORATIONS**



FREE CATALOG

**CLASSIC AUTO SUPPLY**  
THUNDERBIRD SPECIALISTS  
FOR OVER 55 YEARS!

Thunderbird Specialists  
**CASCO**  
SINCE 1969

**800-374-0914**

ClassicTBird.com



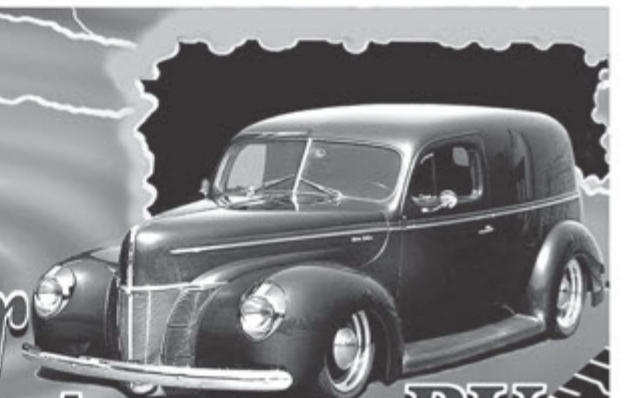
**1932 to 1972 car**

**760-740-2400**

**1932 to 1979 PU**

1941 COMMERCIAL ST.,  
Ste HC, ESCONDIDO CA.  
92029-1233

**www.cgfordparts.com**





# CHEVROLET FOR 1937

*The Complete Car - Completely New*



*Master and Master De Luxe Models*



Sedan



The beauty of the 1937 Chevrolet is but one of many important advances in style and construction that mark all models as *complete cars, completely new*. And they are just as far advanced in safety, comfort, economy, and performance.



*The Sedan has a large luggage space behind the back seat, and a package ledge below the rear window.*

SAFETY PLATE GLASS ALL AROUND AT NO EXTRA COST



Coach



All Chevrolet bodies have been made lower and longer and roomier. The interiors are modernly styled. A strikingly beautiful instrument panel, with dials that are easily read and controls that are conveniently grouped, is a feature of all models.



*The Coach has a full-width front seat cushion, with divided back, and the same luggage and parcel spaces as the Sedan.*



Town Sedan



In the 1937 Chevrolet all-silent all-steel bodies, you ride literally surrounded by the protection given by Unisteel construction—solid steel Turret Top, steel panels, and steel floor, all forming a solid all-steel structure, all-silent and safe.



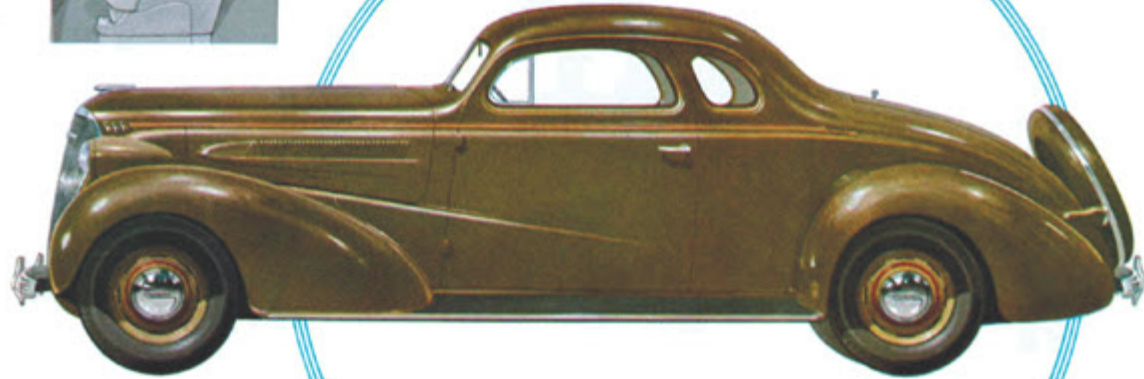
*The Town Sedan built-in trunk has a large-capacity luggage space, and extra storage room in the tire compartment. There is an inside package ledge as well.*

SAFETY PLATE GLASS ALL AROUND AT NO EXTRA COST





## Sport Coupe



Wider windshields and larger windows give all 1937 Chevrolets the advantage of unusually full vision for driver and passengers. All coupe models have windows in the rear quarter body panels, for increased visibility and better appearance.



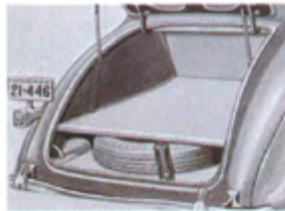
*In the Sport Coupe, available in the Master De Luxe model only, the full-width front seat is ample width for three passengers. There is a large interior luggage space behind the divided rear back. An exceptionally large package ledge is an added convenience.*



## Business Coupe



Chevrolet has long been famous for its economy—especially its low operating cost, which is now further reduced by the increased efficiency of its more powerful valve-in-head engine, and by its greater durability and labor-saving ease of servicing.

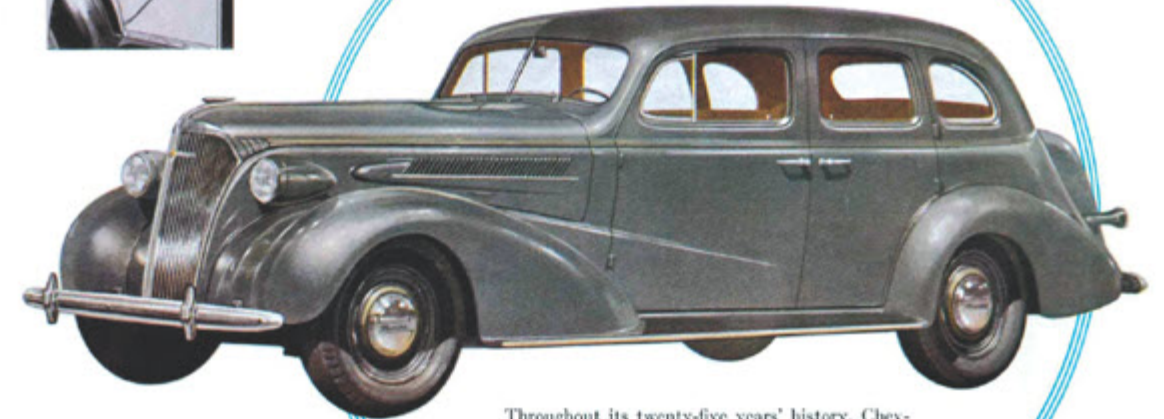


*The Business Coupe has unusual capacity in the rear deck, and an extra large interior package ledge. For increased driving range, this model has an 11-gallon fuel tank.*

SAFETY PLATE GLASS ALL AROUND AT NO EXTRA COST



## Sport Sedan



Throughout its twenty-five years' history, Chevrolet has been known for its durability. Sturdiness is built into every model. Skillful design, high quality materials, and precision manufacturing methods are guarantees of long life and service.



*The Sport Sedan has a convenient package ledge at the back of the rear seat, and a spacious built-in trunk with a separate tire compartment.*



## Cabriolet



Added power, increased flexibility, superior smoothness, give the 1937 Chevrolet improved performance ability that will set new standards. It has balanced performance—no one quality over-emphasized at the expense of any other.



*The Cabriolet, available in the Master model only, has the same seating arrangement, and the same luggage and package space, as the Master De Luxe Sport Coupe.*

SAFETY PLATE GLASS ALL AROUND AT NO EXTRA COST



MAJOR FEATURES OF THE 1937 *Chevrolet*

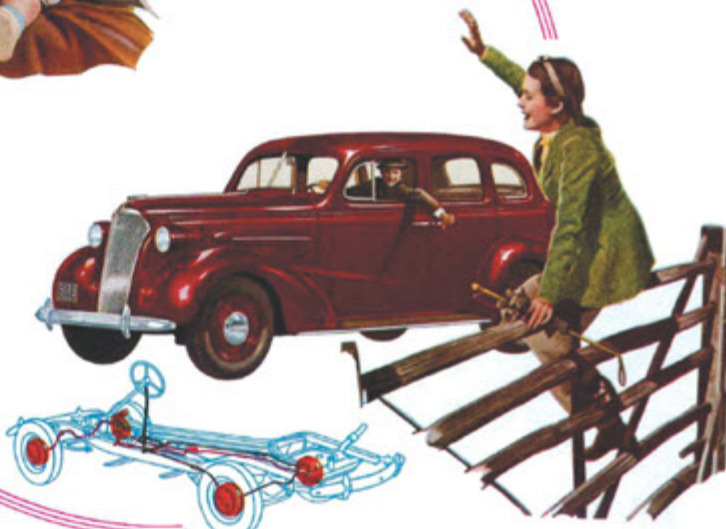
**Improved  
Gliding Knee-Action Ride**

Knee-Action, proved by more than 2,000,000 users to give the world's safest, smoothest ride, is regular equipment on every 1937 Chevrolet Master De Luxe model. You get this outstanding safety and comfort feature at no extra cost. Knee-Action levels the ride. The springs absorb the road shocks; the rest of the car rides smoothly, the passengers ride at ease.



**Perfected  
Hydraulic Brakes**

To the advantages of hydraulic brake operation—positive control, self-equalization, reliability—Chevrolet has added the equally important advantages of its own exclusive brake mechanism within the drums. Chevrolet alone has the fully controlled braking gained through the use of double-articulated brake shoe linkage—a design that automatically insures full contact between brake shoes and drums, and automatically adjusts itself as the brake lining gradually wears from long usage.



**Genuine Fisher  
No Draft Ventilation**

Winter or summer, wet weather or dry—you can ride in comfort with genuine Fisher No Draft ventilation. You let air sweep freely through the car, or control a gentle circulation that exhausts stale air and tobacco smoke—and prevents windshield fogging. Comfort, health, safety, convenience—all are provided by the fully-controlled Fisher No Draft ventilation.



**Safety Plate Glass  
All Around at No Extra Cost**

Extra protection at no extra cost is yours in a Chevrolet—for you get the protection of safety plate glass all around. The finest quality, clear-visibility safety plate glass is standard equipment, included in the list price. Chevrolet's all-steel bodies with all safety plate glass give true protection for you and your passengers.

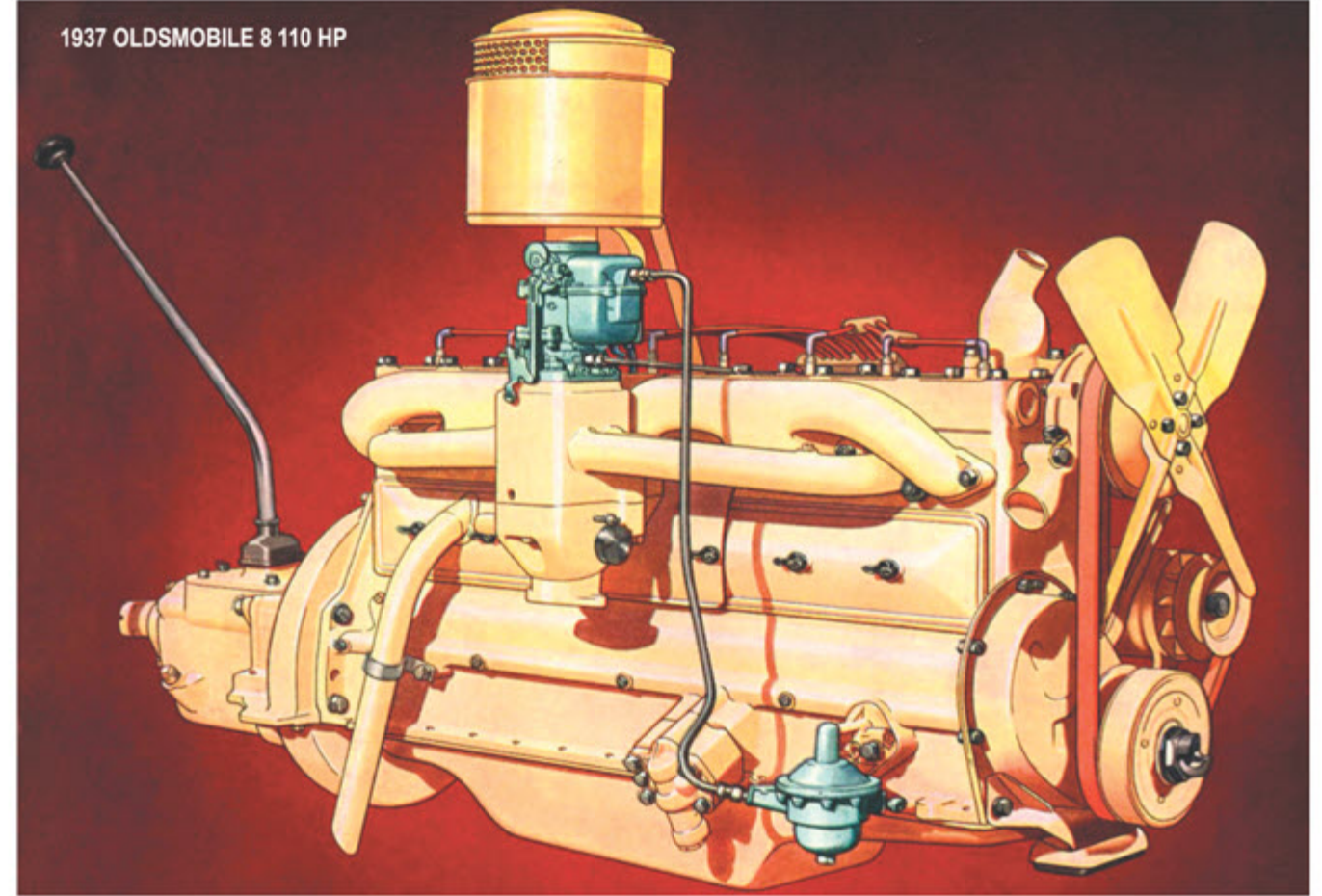


MAJOR FEATURES OF THE 1937 CHEVROLET



**2001 Ford Bullitt Mustang, all original, garage kept, 13,000 miles, Dark Highland Green, one of 4000 Dark Highland Green Bullitt Mustangs produced in 2001. Asking \$30,000. [jamesmchilders@icloud.com](mailto:jamesmchilders@icloud.com).**

1937 OLDSMOBILE 8 110 HP





FULL COLOR LAMINATED WIRING DIAGRAMS  
FOR 30's - 40's - 50's - 60's & 70's CLASSIC CARS & TRUCKS

**CLASSICCARWIRING.COM**

SERVING THE RESTORATION COMMUNITY SINCE 2001

CLASSICCARWIRING  
PO Box 780012  
SEBASTIAN, FL 32978  
(888)606-5319

*This ad isn't in color, but our diagrams are!*

EST. 1976

*Randy Hallman*  
**SPECIALTY CARS**

- Complete Restoration
- Sales of Special Interest & Investment Autos
- Specialty Body Work

Hot Rods - Customs  
Restorations - Corvettes

Phone 906-774-5897  
N3792 US 2  
Iron Mountain, MI 49801

www.randyhallmanspecialtycars.com  
FACEBOOK: Randy Hallman

**Thunderbird Headquarters**

SINCE 1979

COMPLETE PARTS WAREHOUSE FOR  
1955-1972 THUNDERBIRDS

Call, email or go online for a  
*free* Thunderbird Product  
and Accessory Catalog

Phone: 1-925-825-9550  
Email: parts@tbirdhq.com  
Website: www.tbirdhq.com

*From restoration to maintenance we've got it all.*

**Club Plaques**

Cast Aluminum Car Club Plaques  
Kustom made to match Your Club or Association's logo.  
Over 180,000 satisfied customers!  
Also, Polished Finned Aluminum Engine Accessories  
www.obrientruckers.com

**O'Brien Truckers**  
29 A. Young Rd • Charlton, MA 01507  
1-508-248-1555 • EMAIL: info@obrientruckers.com

*Quality Chrome Plating*  
Specializing in:  
Copper, Nickel & Chrome Replating  
Restoration & Replating of Antique & Classic Car Parts  
Polishing & Repairing of Stainless Steel

**Librandi's**  
PLATING  
COPPER • NICKEL • CHROME

93 Airport Drive  
Middletown, PA 17057  
Phone: 717-944-9442  
Fax: 717-944-3015  
www.carchrome.com  
email: todd@carchrome.com

**1955-57 Thunderbird Parts**

**Parts . . .**

- . 1955-57 Thunderbird Parts
- . Concours Correct Reproduction Parts
- . Large Used & NOS Parts

**Concours Restorations. . .**

- . Classic, Antique & Muscle
- . Concours Correct & Resto-Mod
- . We can even find your core car
- . Full & Partial Restorations Available

**Cars . . .**

- . We buy & consign
- . Check out our website for Cars for Sale and Restorations in Progress

**HILL'S**  
**AUTOMOTIVE**  
CLASSIC CAR RESTORATION & PARTS  
"Make Your Vision Come True"  
www.hillsresto.com

Schedule an appointment today to tour our shop  
in Racine, Ohio 45771  
tech/office: 740-949-2217  
Toll-free order line: 866-949-1956  
www.hillsresto.com  
tbirdcenter@sprintmail.com

**Hot Rods to Muscle Cars-**  
*From small projects to turn-key rides.*

**BUILT TO PERFORM!**

- We specialize in building 28-70 Fords, 34-78 Chevys, Mustangs, Camaros and all Muscle Cars • We use our years of experience to do it right the first time, so you save time and money!

We sell and install — Frames • Suspensions • Complete Rolling Chassis • Engines/Transmissions  
• Bodies and Reproduction Parts • Brakes and Fuel Systems • Hot Rod parts  
• Project cars and turn key street rods for sale **FREE Catalog**

**www.heinzmanstreetrods.com**  
Call us! 402-886-2275 FAX: 402-886-2998  
1305 North C Road, Phillips, NE 68865

**HEINZMAN**  
**STREET ROD SHOP**

*Celebrating our 20th Anniversary*

**Mustang**  
COUNTRY  
International

"Home of the Sonny and Cher Mustang Convertibles"

Cars, Parts and Upholstery  
14833 Lakewood Boulevard  
Paramount, CA 90723  
**562-633-2393**  
http://www.mustangcountryintl.com



# Buick

WHEN BETTER AUTOMOBILES ARE BUILT . . . BUICK WILL BUILD THEM . . .



*OF all who buy fine cars today, the majority are choosing Buick. In Buick, they find everything they seek—smart, sparkling style; quality which evidences itself day after day in superb performance and economy; everlasting dependability. Those who buy Buick buy the luxury of generous room, of splendid appointments, of easy operation, and that greatest luxury of all—lasting satisfaction.*

## THE BUICK OF TODAY

MORE MORE THAN EVER A DEPENDABLE CAR . . . A REMARKABLE VALUE

1935  
Series  
40, 50, 60, 90



BEFORE  
THEY WERE  
CALLED  
Special, Super,  
Roadmaster

One of the most important questions a family, or an individual, is called upon to answer is this, "What car shall we buy?" On the answer to that question depends whether the purchase of a car shall be followed by complete satisfaction with its performance, its dependability, and its economy.

Every year for the past thirty-one years, thousands of motorists have decided that they prefer Buick to any other car. And the records show that their choice has been fully verified.

As a consequence, wherever you go, with whoever you discuss motor cars, you hear Buick mentioned as one of the

really fine cars of the world. You hear it said everywhere that you just can't beat a Buick for those features which everyone wants in a car—beauty and smartness, stamina and reliability, performance and economy.

For a Buick is more than just "another automobile". It is an automobile of such quality and distinction, with such a well established reputation for long life and dependability that to own a Buick is to enjoy a cherished possession. To ride in a Buick is to know the thrill of as fine and smooth, as comfortable and luxurious transportation as it is possible for your money to buy.

To drive a Buick is to have under your safe and sure control one of the smoothest engines, one of the finest power plants in a modern automobile.

We believe that the Buick of today cannot be surpassed for smart and modern styling; fine, dependable performance; or high standard of craftsmanship, materials, and design. Evidently, the public believes that, too, for the public has accorded today's Buick a measure of acceptance such as no other fine car ever enjoyed.

In the following pages, we show you the Buick of today in twenty-five smartly styled Fisher bodies. We also try to give you an idea of the mechanical features which make every Buick so comfortable to ride in, so smooth on the road, and so easy and safe to drive. We earnestly suggest that you drive a Buick before you decide on any car—a privilege any Buick dealer will gladly accord you. Then, if you are now only "thinking" of buying a Buick, we know you will obey the dictates of your better judgment and decide on a Buick.

### A WORD ABOUT THE NEW LOWEST PRICED BUICK

The lowest priced Buick, recently introduced, is proving one of the most popular cars Buick ever built. And no wonder!

We doubt whether you will see a finer performing car on the highways in many a day than this new car, or one that offers more genuine, all-around value for the money. It is every inch a Buick with Buick's styling; its fundamental features of operation and control; and Buick's stamina, dependability, and long life. It is worthy, in every way, of the famous name it bears. It will live up to everything you ever expected of a Buick—and more. For into it are embodied features of improvement which only Buick engineers could provide. There are six cars in this new series. Your attention is especially called to the descriptions and illustrations of them which follow immediately in these pages.







**BUICK DEPENDABILITY FEATURE . . . 1**

★ The Series 40 chassis, with its time-proven Buick features, is an important factor in making this the finest engineered car at, or anywhere near, its price. You couldn't get a stronger, safer foundation for a car than the Buick chassis with its X-girder type frame, which sets a new standard for frame construction and insures ample strength for the mounting of the independent front wheel suspension system.

*The roomy interiors of this 40 Series . . . which comprises six models of the lowest priced cars that Buick ever offered . . . are designed, trimmed, and upholstered to provide the maximum in beauty, smartness, and comfort. And the materials for these interiors are chosen as much for durability and wear as they are for style and luxury. Notice how much leg room there is in this fine car. A Buick interior maintains a pleasing appearance for a long, long time after lesser cars have begun to look old and shabby.*

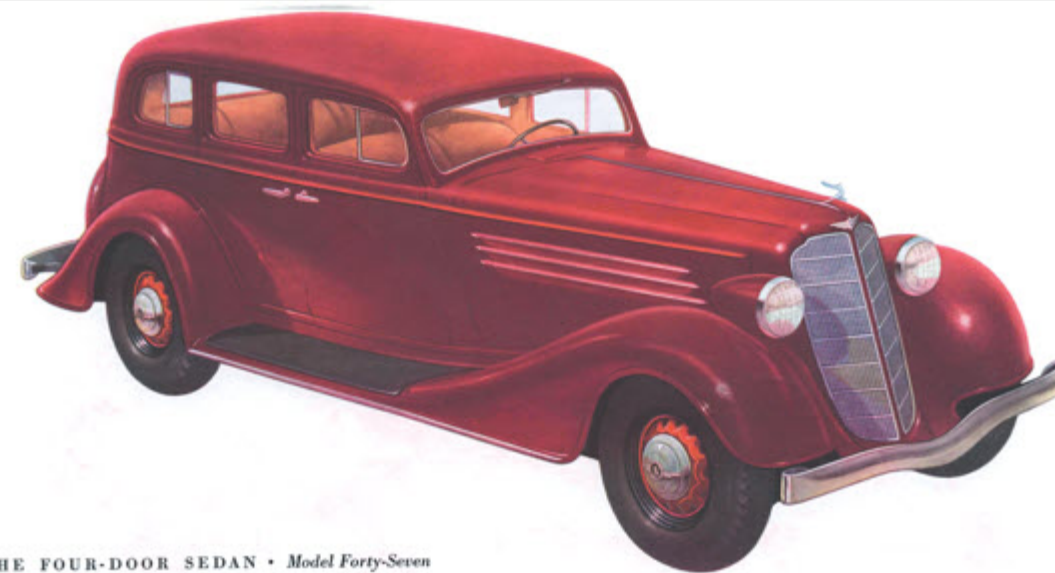
*The model shown on this page is a beautiful, roomy sedan comfortably seating five people. It is luxuriously upholstered in mohair velvet or whipcord, at the option of the buyer. Two inside sun shades for driver and front seat passenger. Ash tray on back of the front seat. Fisher No Draft ventilating windows in front doors and in rear quarters. Arm rests for driver, front seat passenger, and rear seat passengers. The trunk is gracefully built into the body to conform with the body's smart, streamline design.*

**BUICK DEPENDABILITY FEATURE . . . 2**

★ Today's Buick, like the fine Buicks of the past, is powered with the Buick Valve-in-Head Straight Eight Engine, world famed for power, flexibility, dependability, long life. The 40 Series engine develops 93 horsepower . . . speed up to 85 miles an hour . . . and accelerates from 10 to 60 miles an hour in 21 seconds. Many Buick owners get from 15 to 18 miles to the gallon of gasoline!



THE FOUR-DOOR CLUB SEDAN • Model Forty-One . . . with built-in trunk



THE FOUR-DOOR SEDAN • Model Forty-Seven

**BUICK DEPENDABILITY FEATURE . . . 3**

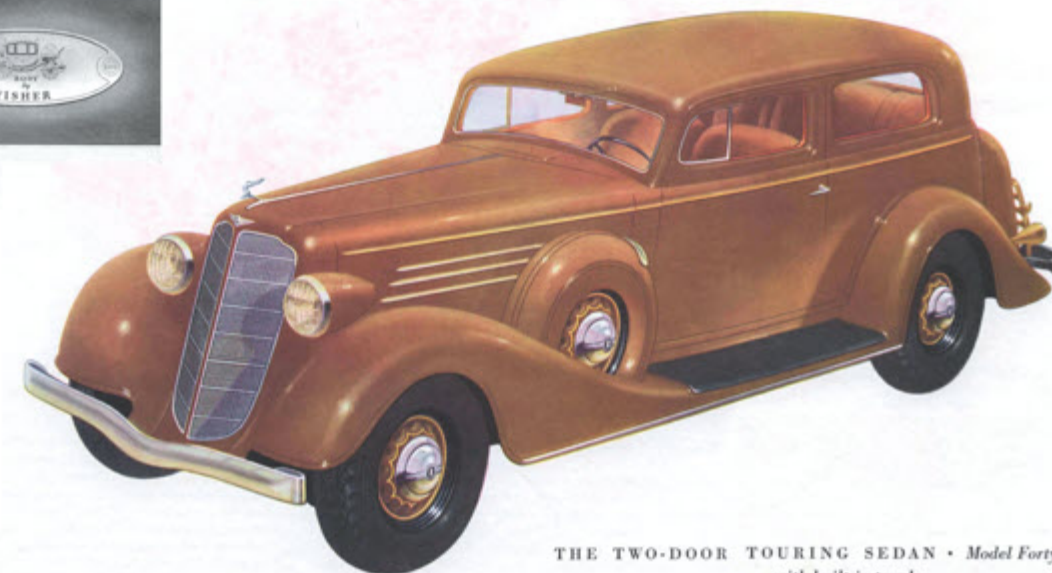
★ A very important link in the Buick chassis is the torque tube drive, which transmits the driving torque from the rear axle to the frame and serves to keep the rear axle and wheels in perfect alignment. This fundamental Buick feature is largely responsible for Buick's dependable performance and long life. For smoother operation, tubular propeller shafts are used on all of today's Buicks.

*The Standard Sedan* type of car has always been immensely popular, because of its beauty and smartness and because it is so big and roomy. The upholstery is of the finest mohair velvet or whipcord, at the option of the buyer. As in all today's Buicks, there is the health and safety of Fisher No Draft Ventilation. All cars in this series are furnished with safety glass all around. The cost of safety glass in windshield and ventilating wings is included in the list price. There is a slight additional charge for the balance.

*Here are Buick beauty and design* applied to one of the most popular body styles that Fisher Body craftsmen have built. There are two individual, collapsible front seats, and they are as comfortable as they look. Plenty of leg room in the front compartment as well as in the rear. Doors are exceptionally wide. Assist strap on right side of rear compartment. Ash tray on each side of the rear seat. Notice, too, the big trunk with plenty of space for luggage.

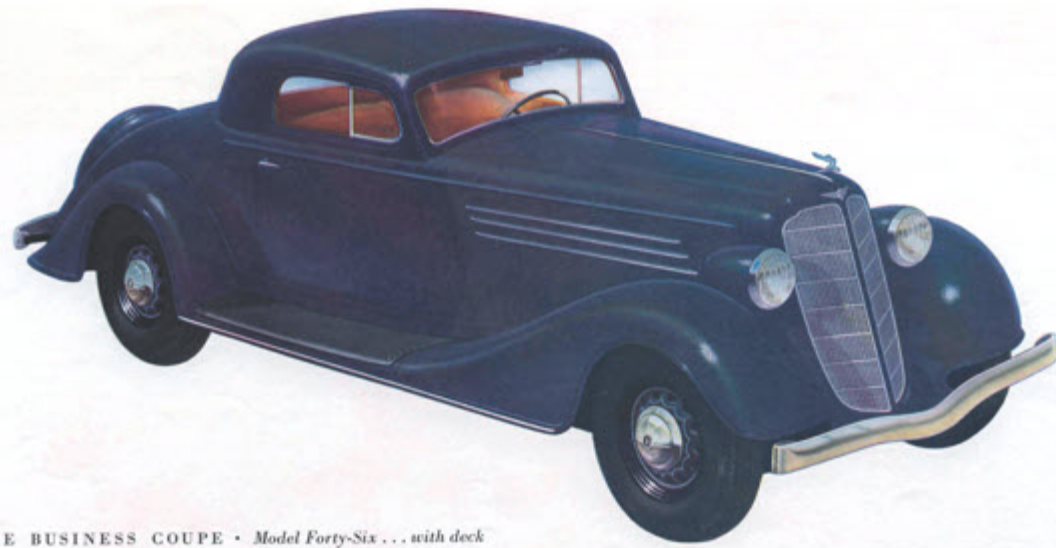
**BUICK DEPENDABILITY FEATURE . . . 4**

★ Every Buick is equipped with a Fisher body—one of the quietest, smartest bodies a motor car can have. It is thoroughly insulated against heat and cold, and is constructed to provide the maximum in style, long life, and dependability. Every Fisher body is designed by craftsmen who have mastered the art of body building to furnish the highest degree of comfort possible in a motor car.



THE TWO-DOOR TOURING SEDAN • Model Forty-Eight . . . with built-in trunk





THE BUSINESS COUPE • Model Forty-Six . . . with deck

**BUICK DEPENDABILITY FEATURE . . . 5**

★ The Buick of today offers a truly revolutionary improvement in riding ease, smoothness, and comfort, due to Knee-Action wheels. This form of front wheel construction, which has proved so effective, permits the front wheels to move independently of each other and allows the use of frictionless coil front springs. Thus, one wheel may go over a rut or a deep spot in the road without affecting the other wheel.

*The Convertible Coupe* is so much in demand for its youthful smartness that this model has now been added to the 40 Series—a group of the lowest priced cars that Buick ever offered. Like every other car in the series, it is every inch a Buick, offering features of style, performance, and dependability that make it a Buick through and through. The upholstery is tan leather or tan Bedford cloth. The seat is deep and wide. Plenty of leg room, too. This car is certain to be one of the most popular in this series.

*This smart Business Coupe* is an especially fine car for personal transportation. It has plenty of leg room and elbow room for two persons. As in all models of this series, there is Fisher No Draft Ventilation; safety glass in windshield and ventilating wings (all around at slight additional cost); and a package compartment in the instrument panel. Under the deck, there is unusually large space for transporting baggage, samples, materials, and so on. There are comfortable arm rests on both doors, and the seat is adjustable.

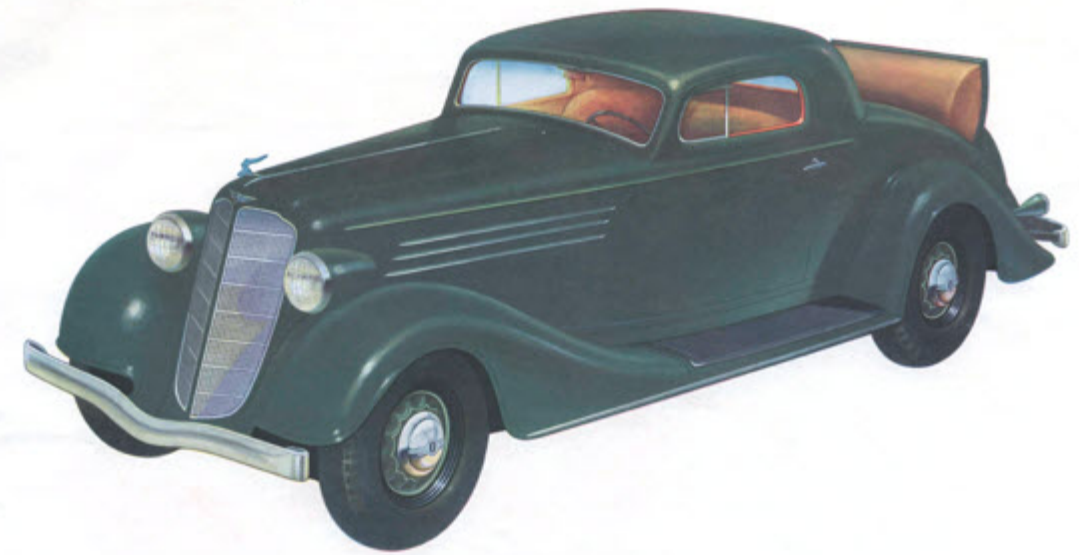
**BUICK DEPENDABILITY FEATURE . . . 6**

★ One of the reasons for Buick's smooth, easy performance is Buick's synchronizing transmission, which is equipped with helical gears throughout, assuring quiet operation in low, second, and reverse. The universal joint is automatically lubricated from the transmission. Like every other mechanical feature in a Buick, the transmission system is thoroughly dependable.



THE CONVERTIBLE COUPE

THE SPORT COUPE • Model Forty-Six S . . . with rumble seat



**BUICK DEPENDABILITY FEATURE . . . 7**

★ All Buicks are equipped with an automatic choke, which permits a much more efficient choking of the carburetor than is possible by the most expert use of a manual choke control. A thermostat automatically insures the proper amount of choking in relation to the operating temperature of the engine. This is a dependability feature for real, practical value.

*People who prefer* a smart Sport Coupe to any other type of car will especially like this beautiful and symmetrical model with its modern streamlined Fisher body and its roomy, convenient rumble seat. There is plenty of leg room in the compartment; the adjustable seat is exceptionally comfortable for two people; and the upholstery may be had in tan whipcord, tan leather, or mohair velvet. As in all models of this series, there is a package compartment at the right in the instrument panel.

## BUICK SERIES 50

THE five beautiful Buicks of this series are the finest cars Buick ever offered at so moderate a price. Each has many distinctive appointments and refinements, so that, regardless of your taste or your requirements, you are certain to find in the 50 Series the very car you need. There is, for example, a smart, fast Business Coupe for the motorist who wants a two-passenger car with ample deck space in which to carry plenty of luggage. There is a smart Sport Coupe with a rumble seat—just the car for those who like a model with plenty of dash and style. There is a Convertible Sport Coupe with a rumble seat. It is an ideal car for those who prefer to alternate the advantages of a closed car with those of an open roadster. As a family car, the Buick 50 Series Four-Door Sedan has never been approached at anywhere near the price. Large, roomy, comfortable, it embodies all the fundamental features, as well as the modern improvements, which have made Buick the favorite family car in thousands of American homes for the past thirty-one years. The Victoria Coupe, with built-in trunk, is another car especially designed for families who do a great deal of traveling.





**BUICK DEPENDABILITY FEATURE . . . 8**

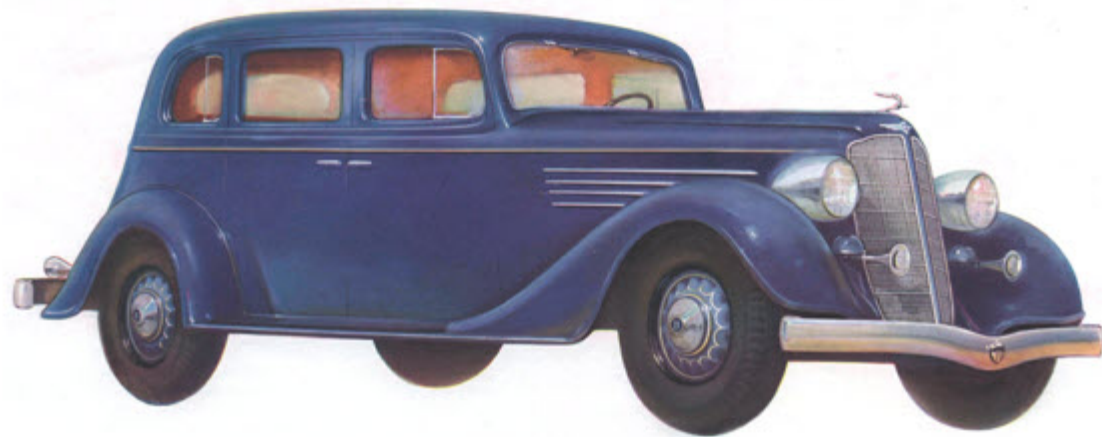
★ Multibeam headlighting, with passing beam controlled by a light touch of the foot, is one of Buick's newest safety and dependability features. It is a feature of all the Buicks of today. This headlighting system differs from conventional types in that the right side of the road and the ditch can be brilliantly illuminated, while the illumination on the left is lowered to prevent glare to passing cars.

*In the 50 Series, following, it will be observed that Buick has gone to great lengths to provide fittings and appointments that are the last word in comfort and good taste. The upholstery is costly and luxurious; colors are selected to harmonize with the general color scheme of the car. Robe rails, carpet-covered foot rails, floor carpets, assist cords, ash trays, arm rests—all reflect the most modern style and design. Especially, note the wide, deep seats and the roominess of the luxurious interior.*

*This Four-Door Sedan is usually looked upon as a family car, because of its exceptional roominess. It holds five passengers very comfortably. The upholstery is the very best the market affords—rich, elegant mohair velvet or whipcord. Seats are deep, wide, and comfortable. There are arm rests on both front doors, as well as on both sides of the rear seat. Fisher ventilation, of course. This car is considered the standard of value in its price class.*

**BUICK DEPENDABILITY FEATURE . . . 9**

★ The accompanying illustration shows the Buick automatic choke of the 50, 60, and 90 Series by which choke control is accomplished when starting the car; the cold idle control, which provides correct idling speed whether the engine is cold or completely warmed up; and the automatic heat control of the carburetor.



THE FOUR-DOOR SEDAN • Model Fifty-Seven



THE BUSINESS COUPE • Model Fifty-Six . . . with deck

**BUICK DEPENDABILITY FEATURE . . . 10**

★ The front seat of every Buick is easily adjustable while the driver is seated, to permit the driver to choose the relation between the seat and the pedals that is the most comfortable for him. The seat-adjusting lever is conveniently located on the left side of the front seat cushion. Merely lifting the lever allows the seat to be quickly and easily adjusted to the required position.

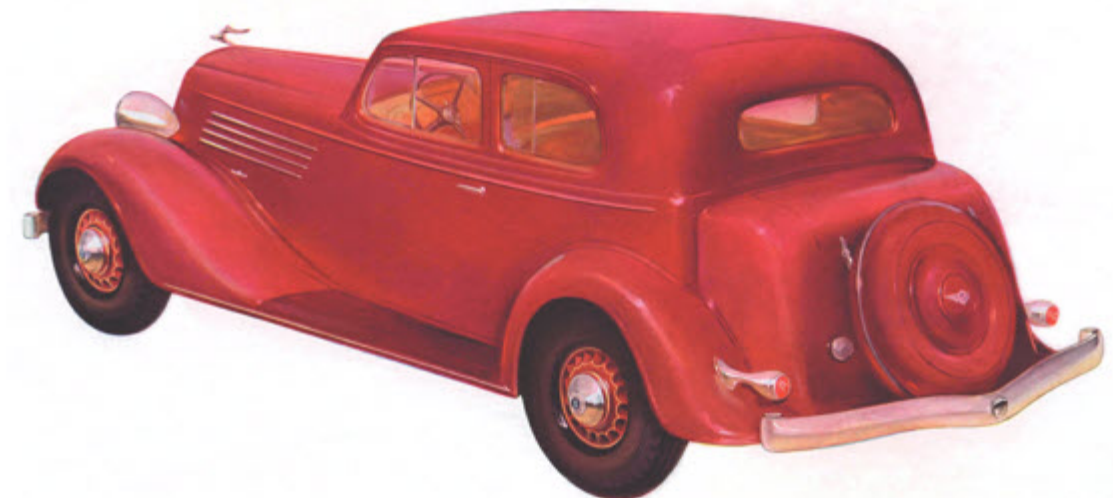
*Those who need an extra roomy car for business or personal transportation will find this smart Business Coupe exactly suited to their needs. It has plenty of storage space in which to carry books, packages, merchandise, or anything a person might want to use in the course of a day's business. There is a pocket under the cowl on the right-hand side; package compartment on the instrument panel; ash tray and lighter . . . in fact, all the conveniences one would want in a car for constant, daily use.*

*Five adults can ride comfortably in this beautiful Victoria Coupe with spacious built-in trunk. Horizontal hood louvers; modern design door handles; chrome-trimmed running board; 16-spoke all-steel wheels; chrome head lamps—all combine to make this one of the smartest cars on the highway today. Comfort for the driver and passengers is assured by means of such features as arm rests; large rear seat arm rests; wide and deep seats; rich upholstery; and Fisher No Draft Ventilation.*

**BUICK DEPENDABILITY FEATURE . . . 11**

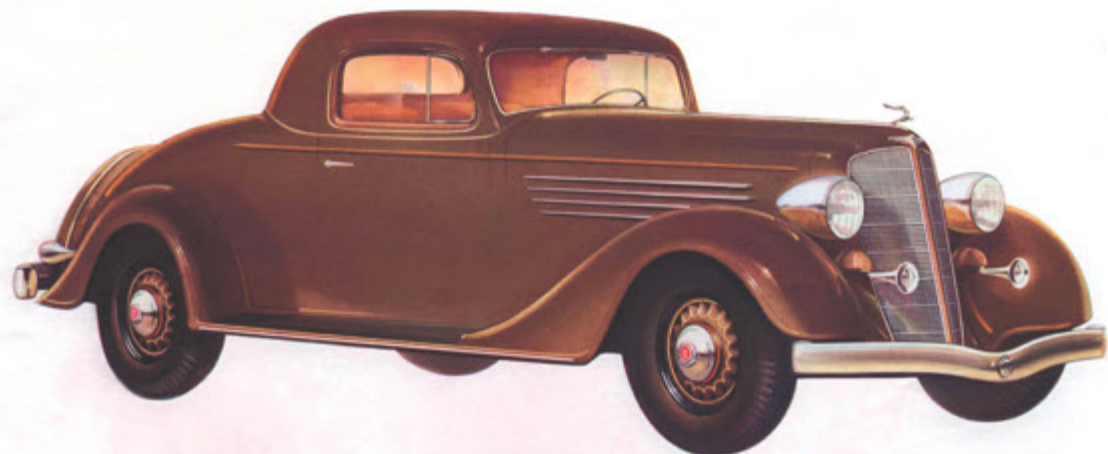
★ Buick's air intake, with cleaner and silencer, assures a generous supply of clean air at all times and at all speeds. Intake noise is practically eliminated. Buick's lubricating system is protected by an oil filter of exceptional efficiency. Buick's combination fuel and windshield wiper vacuum pump assures an adequate supply of fuel and constant windshield wiper action.

THE VICTORIA COUPE • Model Fifty-Eight . . . with built-in trunk





THE SPORT COUPE • Model Fifty-Six S . . . with rumble seat



**BUICK DEPENDABILITY FEATURE . . . 12**

★ The Buick ride stabilizer is located just back of the rear axle, and its function is to prevent rolling and side sway when rounding sharp curves or corners. The ride stabilizer is not only an important feature in the Series 50 Buick but an equally important feature in every Buick. This is one of the features which contribute so much to Buick's superb ride.

*Those who want* an extra roomy Sport Coupe will welcome this extremely beautiful streamline model. It seats three people comfortably in front, while a spacious emergency seat in the rear provides room for two more passengers. The rear window can be lowered. In addition to the fundamental Buick features common to all models, this fine car offers concealed type window curtains. There is a choice of fine quality whipcord or mohair velvet. Leather is available at slight extra cost.

*This smart Convertible Coupe* has all the convenience of a coupe when the top is up, including Fisher No Draft Ventilation, and all the style, snap, and freedom of a roadster when the top is down. The interior is styled with choice of tan whipcord or genuine tan or black hand-buffed leather. Both doors have arm rests for driver and front seat passenger. On all convertible models, the top boot is standard equipment. It is easy to put on and take off.

**BUICK DEPENDABILITY FEATURE . . . 13**

★ New threaded type spring shackles add greatly to the safety and dependability of the Buick of today. These spring shackles not only eliminate side sway and noise but they do not require adjustment. Harmful dilution of the engine oil is prevented by a crankcase ventilator, which removes water and fuel vapors.



THE CONVERTIBLE COUPE • Model Fifty-Six C . . . with rumble seat



**BUICK DEPENDABILITY FEATURE . . . 14**

★ All Buicks are equipped with Fisher No Draft Ventilation—a built-in ventilating system that utilizes the air currents generated by the motion of the car to circulate fresh air throughout the body according to the individual preference of each passenger. A recently developed feature is the snow, or rain, deflector which is fitted to the front doors above the ventilator.

*Interiors of the 60 Series* provide the maximum in restful ease, as well as an atmosphere of exceptional charm. They are particularly roomy; seats are deep, wide, and comfortable. In several models in this series, there is a wide, comfortable center arm rest in the rear seat. And, of course, as in all Buicks, there are arm rests for driver and front seat passenger. The upholstery is rich and inviting; there is a choice of several fabrics to harmonize with the character and the color of the car.

## BUICK SERIES 60

THE truly fine cars comprising the 60 Series offer six models from which to select an exceptionally smart car for personal, business, or family use. The cars in this series have a longer wheel base than those in the 50 Series, and the interiors are even roomier. There is a beautiful Four-Passenger Sport Coupe and an equally smart Four-Passenger Convertible Coupe, each with long, low top lines and a sweeping deck which gracefully blends with the sloping radiator and long hood—a pleasing new style in cars of this type. Each coupe has a rumble seat accommodating two passengers. The Four-Door Club Sedan of this series offers ample convenience and comfort for five passengers and the additional advantage of a large trunk built into the rear of the body. In style, luxury, and comfort, the Five-Passenger Sedan sets a new standard for a medium-priced car. The Five-Passenger Victoria Coupe, one of the most popular models Buick ever built, has an exceptionally wide front door and easily adjusted folding seats. A large built-in trunk gives generous carrying capacity. The Five-Passenger Convertible Phaeton is essentially a custom-built type, and has all the desirable features of both closed and open models.