

DRIVING OLD CARS

🚗 Auto Restoration
Products
Pg. 39

🚗 Shop Safety "Shop Rag
Hazards" Pg. 35

🚗 Used Auto Parts
for GM Cars & Trucks
Pg. 20

🚗 1938 PACKARD 6,
Redoing the Trunk Pg. 4

SOUTHERN WHEELS



**1950 Oldsmobile
88 Futuramic 2 dr
303/135 hp
Rocket V8, \$29,900
818-591-1313**



Ford

'56 Customline 2 dr, 292-703-727-4935



Pontiac

'65 GTO 2 dr, orig 389, auto, 703-727-4935



Corvette

'79, 350 V8, 4 sp, T-tops, 952-243-3876



Corvette

'66 Duntov, 327/350, 4 sp, posi, 706-857-3916



Volkswagen

'79 Beetle Conv, 4 sp, 716-397-7102

41st
YEAR

41st
YEAR

41st
YEAR

41st
YEAR

41st
YEAR

41st
YEAR

41st
YEAR

41st
YEAR

41st
YEAR

41st
YEAR

41st
YEAR

41st
YEAR

41st
YEAR

41st
YEAR

WORLDWIDE
COVERAGE
SOUTHERN WHEELS

Greg Wyatt Auto Sales

Delivery Available

706-857-3916

706-506-5745 cell

gwyatt@vintagecorvettes.com

Vintage Corvettes

CORVETTES WANTED!
TOP DOLLAR PAID

10601 Commerce St
Summerville, GA 30747



1967 Corvette Duntov Cpe, Marina Blue, 427/390 Hpauto, PS, PB, PW factory a/c, AM/FM, runs and drives as new. Lots of awards!



1966 Corvette Cpe, Mosport Green, Black leather int, 327/300 HP, rare factory 3 sp, PS, PB, 2 time NCRS Top Flight, frame off resto, documented 55k miles.



1961 Corvette, Honduras Maroon, Fawn interior, White soft top & coves, all correct matching # 283-230 HP, 3 sp, both tops, 2 time NCRS Top Flight, many awards!



1955 Corvette Conv., 1 of 180 Gypsy Red cars, White int., Beige soft top, all correct 265-195 HP, automatic, white walls, all trunk tools, complete frame off to show cond.



1964 Corvette, Riverside Red, White int., White soft top, all correct 327-300 HP, 4 sp, posi rear, knock-offs, white-walls, frame off restoration.



1961 Corvette Survivor, 2 owner car, Roman Red, White coves & soft top, 283-245 hp, 4 sp, posi rear, both tops, WW tires, owner's manual, no-hit body, perfect frame.



1962 Corvette, Honduras Maroon, Black interior, White soft top, matching # 327-340 HP, radio, heater, spare, jack, ww tires, runs & drives great.



1960 Corvette, Tuxedo Black, Turquoise interior, 283-245 HP, 4 sp, complete frame off restored car, resto photos, runs & drives great! Show or drive.

www.vintagecorvettes.com

41st YEAR!

SOUTHERN WHEELS MAGAZINE



Copyright 2024, SOUTHERN WHEELS MAGAZINE. All Rights Reserved.

JOHNSON PUBLISHING

And that ye study to be quiet, and to do your own business, and to work with your own hands, as we commanded you: That ye may walk honestly toward them that are without, and that ye may have lack of nothing. 1 Thess. 4:11, 12

COMMERCIAL ADS

We have the best rates in the USA! (Our customers say...)

You pay only one price to get:

1. An ad in our printed magazine
2. An ad in our online magazine (www.southernwheels.com)
3. A listing in our Vendor Directory with a link back to your web site.
4. A FREE subscription for as long as you advertise!

Call or email for a Rate Card and an ad size that's right for you.

Phone 706-375-7711 or Email sowheels@aol.com

HOW TO CONTACT US

SOUTHERN WHEELS MAGAZINE

300 LEE AVENUE

CHICKAMAUGA, GA 30707

E-mail: sowheels@aol.com

Web: www.southernwheels.com

CALL: 706-375-7711 M-F 9-5 est

SOUTHERN WHEELS reserves the right to edit copy to fit space. Due care is given each ad for accuracy, but no warranty is implied or given by Publisher. Our advertisers and SOUTHERN WHEELS are not responsible for typographical errors or misprints. No endorsement is expressed or implied by SOUTHERN WHEELS in publishing advertisements for any product or service. Responsibility for performance of any product or service rests solely upon the advertiser of same. Opinions and products featured in articles and press releases are not necessarily endorsed by Southern Wheels Magazine. Readers are encouraged to use their own discretion.

- ANSWERS TO CAR QUIZ : 1. True, 2. False (lower priced series) 3. True 4. True 5. False (1954) 6. False (1936) 7. False (1946) 8. False (not early '56's) 9. True 10. True
- ANSWERS TO MATCH GAME: 1-C, 2-A, 3-J, 4-K, 5-E, 6-G, 7-I, 8-D, 9-F, 10-H
- ANSWER TO POP'S GARAGE: Some of the wire insulation had come off along the hot wire, momentarily touching the metal as the car was in motion!

SUBSCRIPTIONS

One Year (12 issues) 1st Class: \$45.00

We encourage our loyal subscribers to visit our web page www.southernwheels.com, to find the current month's publication, identical to the printed version, and it's FREE. Subscription blanks from previous Southern Wheels Magazines will not be honored.

NAME _____

ADDRESS _____

CITY, STATE, ZIP _____

Credit Card # _____

Exp. Date _____ Signature: _____



DECEMBER 2024

SOUTHERN WHEELS 1



presents 56th annual



ROD & CUSTOM CAR SHOW

Monticello Berndes Center
766 N. Maple St. • Monticello, Iowa

Monticello is located just 35 miles from Cedar Rapids or Dubuque on U.S. Highway 151

February 22 & 23, 2025

Saturday - 11 a.m. to 10 p.m.

Sunday - 8 a.m. to 7 p.m.



▶ 3-D Sound by Disc Jockey Dave Palmer

▶ Balloon Artist Papa Balloon

▶ 40th Annual Model Car Contest

▶ Caricature Artist David Fliss

Have a vehicle for the show that will please the public? Please let us know! Trophies, Cash Awards, Travel Money and No Entry Fee!
Presented over 60 Trophies, \$1,515.00 in Cash Awards and \$3,100.00 in Travel Money in 2024!

www.rodandcustomcarshow.com | 319.465.5119

No part of this poster or handbill may be reproduced without expressed written permission from or by Muller Brothers LLC.



SUPER SWAP XXIV

Presented by the Mopars of Brevard

Friday, February 7th (Swap Meet Only)

Saturday, February 8th (Swap Meet & Car Show)

Wickham Park Equestrian Center

2500 Parkway Drive, Melbourne, Fl. 32935

8 AM-2 PM***Reg. until 11 am.***Rain or Shine

Detailed Info visit website: MoparsOfBrevard.com

Contact: James 321-806-9227 or Penny 321-727-1039

Bb68charger@gmail.com OR Pander2211@aol.com

*** All Make Swap Meet- grassy 20X20 spaces; Early set-up 2 p.m. Thurs. (6th)

*** All Make Show & Shine (Specialty awards given)

*** All Make Car/Truck Corral

**Featured Mopar Convertibles

*** Bake Sale by the MOB

*** Dash Plaques (1st 100 reg-Includes pre-reg)

*** 50/50 & Raffle Drawings

*** Event T-shirt Sales

*** MOB Table-New Membership sign up

-----Clip Entry Form and Mail in -----

Print Name _____ Phone # _____

Address _____ E-Mail _____

City, State, Zip Code _____

Number Of ___ Swap Meet Spaces (\$30 ea. by Jan. 31, 2025, \$35 thereafter) \$ _____

*** (Only automotive related material allowed) ***

___ Vehicle Display Spaces (\$20 ea.) \$ _____

___ Vehicle Car/Truck Corral Spaces (\$20 ea.) \$ _____

Total Amount Enclosed (Cash, Check or Money Order) \$ _____

Send Check/Money Order Payable to: "Mopars of Brevard, Inc."

Mail to: Super Swap XXIV, Penny Anderson, 1002 Glenham Dr. N.E. Palm Bay, Fl. 32905

Liability Statement: By submitting this signed form to participate in Super Swap XXIV, I agree to discharge and hold blameless Mopars of Brevard, Inc., Fl Parks and Wickham Park, and those associated with the management and production and operation of the Super Swap XXIV event, for any and all losses, damages, and injuries of persons, property as an agreement for the right to participate. Further each entrant expressly agrees to indemnify all the foregoing entities and their persons for any and all liability occasion or resulting from the conduct of entrant or participant assisting or cooperating with entrant or under direction/control of the entrant.

Signature _____ Date _____



1938 Packard 6

It Found Me

"Trunk Area"

by Ron Carpenter

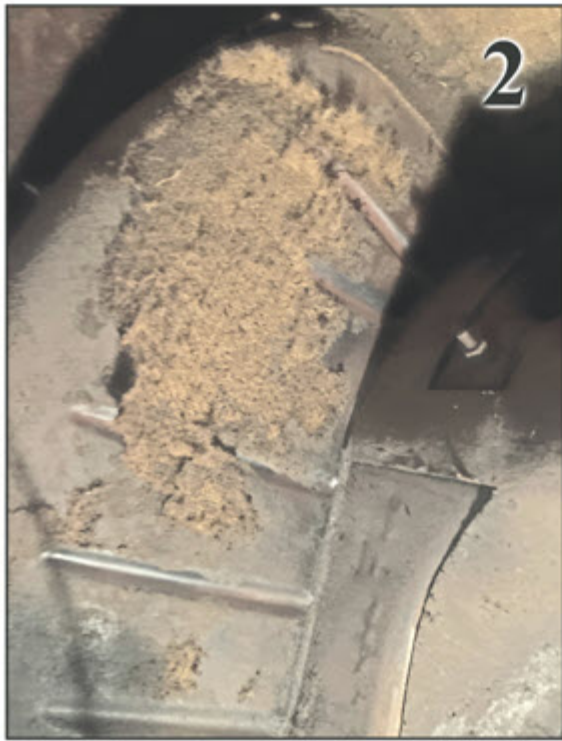


1

When I was working on the body work it was obvious to me that the trunk area had been hit very hard. The trunk lid had been replaced and the support for the shelf, inside the trunk, had been very damaged. When I bought the 4 door 1938 parts car, the trunk shelf support was very nice and so I removed it for use in the coupe. I had to modify the back of the part where it met the body, the slope was different, but otherwise it fit right in.

Number 1

On the left side is the damaged one that I removed from the coupe and on the right side is the one from the sedan. I had to change the area that was against the outside of the body of the car. There is more of a slope the the back side and I had to make the sedan one fit the coupe.



2

Number 2, 2A

Before I could do anything in the trunk I had to remove all the original trunk padding and clean up



2A

the area. They used carpet with pad held on by what looked like TAR, so what a mess. I scraped and used a wire brush to remove it. It was a nasty job and when I finished I took some spray cans of black truck liner and painted the whole inside of the trunk.

Number 3



3



3A

I have the left and right side trunk shelf brackets in place. The passenger side is just metal bracket that is bolted to the floor. The left is the one that I replaced and I bolted it in where I could and then pop riveted it in others. There were some tabs that I had to cut out so I just added a couple more tabs and the attached it to the floor. The original part was welded to the floor.

Number 4

Once I had the whole trunk area cleaned and painted I needed to put something on the floor area, under the tire, so I



4

decided to reuse the original floor covering. It was in good shape and it looked like it would allow the tire to slide in and out from under the shelf.



Number 5
The trunk has two pieces of plywood to build the shelf. The front one was usable as it was but the back (the one that when you open the trunk) was damaged. They have a hole in the board so you can check the air and if necessary fill the spare tire. This hole makes the area weak and it breaks. Packard should have made it stronger to start with.

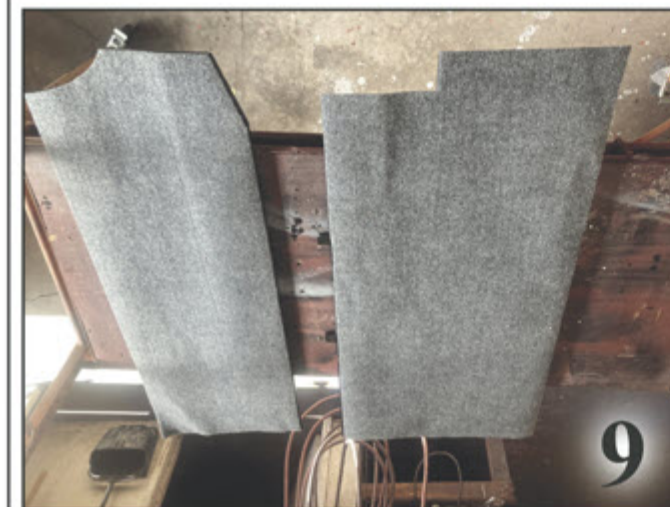


Number 6
I have made the new piece of wood and set it in the car to check for size.



Number 7
I have cut the hole in the wood and you can see that it is a very thin area and that was why the original failed. I will reinforce that when I am finished.

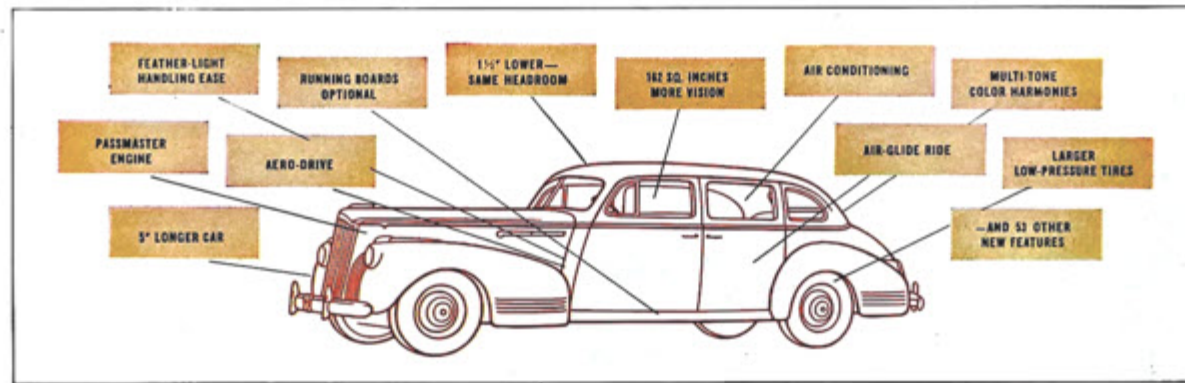
Number 8, 8A
I have finished checking the fit on the boards and I am ready to paint them. I have them painted and installed finished checking for fit and they are now ready for the carpet.



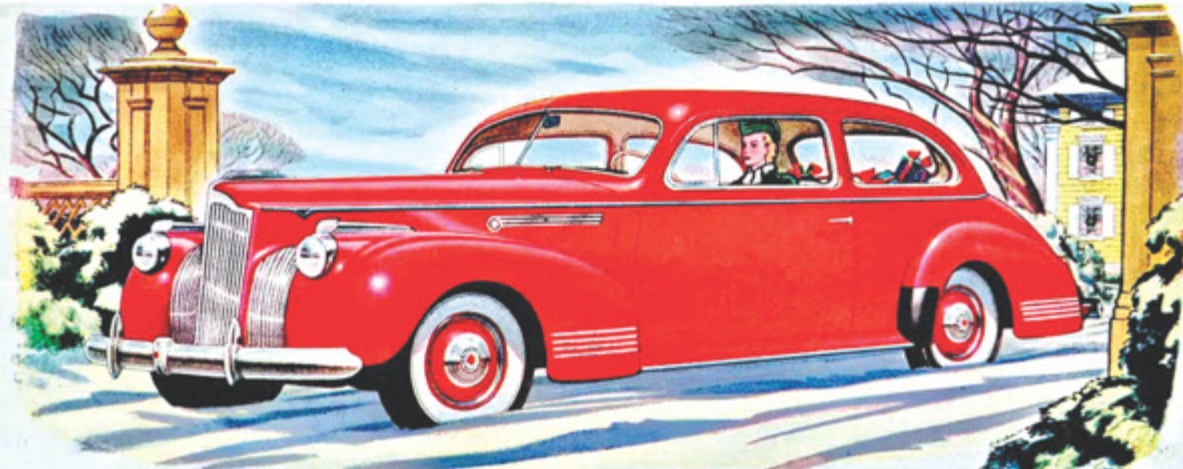
Number 9
I had some carpet left over from another project and I used that to cover the boards. I have them cut to fit the boards and now I will glue them after I cut the hole.

Number 10
This is my completed trunk with the shelf installed. I needed to reinforce the plywood and I chose to use a 1/2 aluminum channel to do that. The original board was real 1/2 inch plywood but today all you can get is 15/32 inch plywood (that is what they call it today) and that actually helped. Because the plywood was 15/32 the 1/2 aluminum channel was a little bigger I was able to "tap" it onto the board and it compressed the carpet (good thing I used a cheap piece of carpet for this project) and I put a couple screws to hold it and the trunk is finished.





Full of surprises as a Christmas stocking



Illustrated: the new Packard One-Ten Deluxe Family Sedan

NUMBER ONE surprise of the new-car season comes with your first wide-eyed look at this longer . . . lower . . . lovelier . . . infinitely more luxurious Packard! With no less than 64 new features!

Take the Passmaster Engine—packing all the famous Packard dash and spirit, but now giving you a dividend of 10% greater fuel economy!

Or take the new Packard 1941 Aero-Drive, which lets your motor loaf even at cruising speeds slowing your engine down 27%...and when you want to pass, automatically cuts in a mountain-climbing gear that *sprints* you by

the car ahead. Well worth its extra cost for added pleasure alone, yet it also cuts gas consumption up to 20%!

And for another top-of-the-stocking surprise, there's the Packard Air-Glide Ride—motoring's mellowest. On boulevard or back road, the Packard Safe-T-fleX spring suspension and larger, low-pressure tires iron out the bumps with magic smoothness.

Yes, match the surprising features of this new Packard against the field. Note Air Conditioning—a Packard first! Real, mechanically cooled air conditioning, an optional extra cost feature that pays big comfort-dividends the whole

year round! Try Tru-course steering . . . test Packard handling ease . . . feast your eyes on the Multi-tone custom interiors, boasting 261 possible trim combinations (122 of them at no extra cost!)

Don't miss a point! And then, find out for yourself how very, very economical this stunning surprise-packed Packard is to own. See your Packard dealer now! Ask him for the facts on Packard low upkeep cost—or better yet, ask the man who owns one.

Five lines of new cars—40 body styles

\$907 to \$5550

Delivered in Detroit, State taxes and white sidewall tires extra! Prices subject to change without notice.

NEW PACKARD—the Class of '41



Southern Wheels Magazine Road Warrior Dale Beaman of Daytona Beach, FL is on the road again, this time with his son Philip Beaman of Louisville, KY. The father-son team attended the 4-day show, November 4-7, in Las Vegas, NV, and sent us lots of pictures, courtesy of Zach's Speed Shop on Tik Tok. Thanks, guys!

PRESS RELEASE

Custom Autosound Manufacturing, Inc new USA-850 was SEMA's "Best New Mobile Electronics Product 2025"



Introducing our newest addition to the Custom Autosound line-up, our virtual analog screen technology (patent pending) USA-850 DigaDial™ Radio. The USA-850 DigaDial™ gives you a choice of 4 distinct one-of-a-kind displays. Three displays feature a classic 60's style analog setting with a red needle that glides across the dial to tune into your favorite AM/FM radio stations. The other display is a all digital display with station, song and artist information. Each selected display gives clear, concise and attractive feedback, enriching your radio experience. Additional Features of The USA-850 DigaDial™: * Further enhancement allows you to change the color of your display and adjust the DSP EQ audio settings. * You can stream from your favorite music app, answer calls via Bluetooth. * Listen to your MP3, WMA or FLAC files from a flash drive and charge your phone via the USB port, add a single disc CD player to enjoy your gold collections, and listen to any portable audio device via the rear, 2-channel RCA inputs. * Includes a 6-volt, 4-channel RCA pre-amp and dual subwoofer outputs for stellar audio when adding external amplifiers. * Built-in 300-watts peak amplifier with adjustable bass, mid-range, treble, fader and balance. Like all Custom Autosound Radios, the small case (7 3/4 by 2" by 5" 3/8) USA-850 radio will fit over 450 different classic vehicle applications without having to alter or cut the original dash or radio opening. Moreover, the simple 3-wire power harness and clearly labeled speaker wire harness insure ease of installation. Give your classic vehicle a modern technologically-advanced radio with a factory vintage look.

Factory Fit Classic Radios
With Modern Technology and Sound Quality

Since 1977



USA-850 DigaDial™ radio shown in a 1955 Chevy dash



DigaDial

The USA-850 Radio

Groundbreaking virtual analog screen technology offering 4 distinct displays: classic analog and digital options with station and song information.

- Customizable display colors and audio settings
- Dual subwoofer outputs for exceptional audio
- Bluetooth® streaming capability
- MP3/WMA/FLAC playback from USB
- Built-in 300-watt p



No Cutting, No Trimming and No Extra Parts Needed! Over 500 Applications!

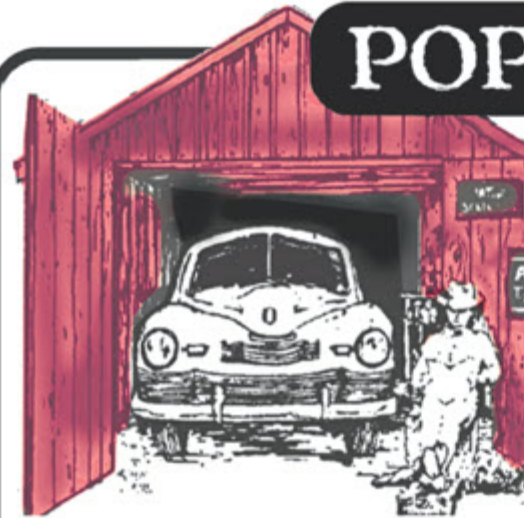


For A Dealer Near You Call: 800-888-8637
customautosoundmfg.com



COMFORT AND ELEGANCE ARE ADDED TO THE BRAWNY, BUILT-TO-LAST CHECKER

POP'S GARAGE



Pop and the guys were taking a break for lunch and naturally, the conversation turned to cars.

They were talking about the auto makers changing to wartime production during WWII.

"When did civilian car production end?" Jim asked Pop.

"February 1942, but plans and changes had happened well before that. America was divided on whether or not to participate in the war. Franklin D. Roosevelt knew it was just a matter of time, and had

been meeting with his close friend Winston Churchill, Prime Minister of England, to help provide materials to help England defend themselves against Germany's relentless bombing. FDR got an approval from congress for 'Lend-Lease' to provide war supplies to Britain, while we could remain neutral. FDR also chose GM's president William S. Knudsen to direct national industrial products, conducting how and who would make wartime supplies and equipment.

In June of 1940, Knudsen left GM to become a 3-star general and do the job. He rounded up his friends in the auto industry at GM, Chrysler,



Hudson, Ford, Packard and Willis-Overland to build the Jeeps. Ford also worked with Willis-Overland to build Jeeps, but they were to be built exactly to W-O specs," Pop said.

"When car production ended in February of '42, the last cars to roll off the assembly line were called 'Victory Cars' –although they looked in most areas close to the '41's. There were some changes due to material shortages. Many cars used cast-iron pistons instead of aluminum. The last models had their chrome painted black to save materials. These were called 'black out' models. They were made only in the last two months before production ended."

"I wonder how many of the classics were lost during the scrap drives?" Phil asked Pop.

(Continued on Page 82)



EVENTS

IL: Moline, 42nd Annual Rod & Custom Car Show at Bend XPO Center, 922 Mississippi Pkwy, East Moline. January 17, 18, 19, Friday 1-8, Saturday 10-8, Sunday 10 - 3. **INFO:** 563-326-2541.

FL: Melbourne, February 7-8, SUPER SWAP XXIV at Wickham Park Equestrian Center, 2500 Parkway Drive, Melbourne, FL. 8 AM - 2 PM, rain or shine, presented by Mopars of Brevard. All make Swap Meet, All Make Show & Shine, All Make car/truck Corral, Bake Sale by the MOB, 50/50 & Raffle Drawings, Event T-Shirt Sales, MOB Table, new membership sign up.

INFO:
MoparsOfBrevard.com,
James 321-806-9227 or
Penny 321-727-1039

IA: Monticello, February 22 & 23, the 56th Annual O'Reilly Rod & Custom Car Show, at Monticello Berndes Center, 766 N Maple St, 11 AM to 10 PM Saturday and 8 AM to 7 PM Sunday. Street Rods, Customs, Race Cars, Pick-ups, Motorcycles, Street Machines and much more!
INFO:
www.rodandcustomcarshow.com,
319-465-5119.

TX: Salado, April 3-6, 2025, the 46th Annual Texas Packard Meet will again be held in historic Salado in the heart of the Texas hill country, sponsored by 4 Texas regions of the Packard Club. Welcoming party, early bird tour, parade to the public, show & swap meet, much more! Details and forms found at texaspackardmeet.org.

PRESS RELEASE



**1949-1954 Glove Box & Trunk Lock Set
With Original Style Key, Pontiac
\$40.00**

1949 1954 Glove Box & Trunk Lock Set With Original Style Key, Pontiac quantity 1
SKU: CL171RPS
California Pontiac Parts
Ph: 714-245-9800

AUTO GLASS



- Custom Flatglass
- Windshields, side glass & back glass for '60s & '70s Muscle Cars
- Logos and date codes available
- Custom flat glass, '20s through '60s
- Fully insured, nationwide shipping.

Quality Service Since 1984
Call Us for a Quote

VINTAGE GLASS USA

50 Ward Street
Rockville, CT 06066
860-872-0018

www.vintageglassusa.com



**Specialist in Restoring
Chevy Tri-Five**

**Large Inventory of
hard to find parts
for your classic.
Including:**

- Wiring
- Steering
- Exterior
- Front End
- Interior
- Body
- Chassis
- Engine
- Sheet Metal
- Convertible

800-869-9131

email: sales@567chevys.com
www.567chevys.com

THE BUMPER BOYZ

Call to Order: 800-815-9009

ANTIQUE • CLASSIC • MUSCLE
CARS & TRUCKS CHROME PLATING
GM, FORD & CHRYSLER BUMPERS



Visit Us At:
www.bumperboyz.com
bobbumperboyz@yahoo.com

2435 E. 54th Street, Los Angeles, CA 90058
Bus: 323-587-8976 Fax: 323-587-2013

Valve Seat Vacuum Tester

I don't care who does your head work. If they can't seal the valves, something is very wrong and you need to catch the problem and correct it BEFORE engine assembly. Several companies make a vacuum tester, but we took the time to design a real nice unit that fits the needs of a race car. This unit was designed around a very good Venturi vacuum pump and utilizes high quality quick disconnects for fast plate changes. We have tried to put together a selection of plates for most applications, but we will also make custom plates for unique applications. A vacuum test is a lot more sensitive than a leak-down tester for analyzing valve seal.

FEATURES:

- *Venturi pump creates a vacuum from any shop air compressor
- *Bronze muffler for quiet operation
- *Low air consumption
- *Quick-disconnect hose fittings fast and leak free
- *Machined from aluminum and anodized
- *Comes with a durable storage box
- *This tool is a MUST for anyone maintaining or building engines. Every time you pull the manifold, you can determine the valve seat condition in seconds.

\$300.00



PRECISION MEASUREMENT SUPPLY

7050 Snowflake Dr.
San Antonio, TX 78238
(210) 681-2405

www.precisionmeasure.com

ANTIQUÉ AUTO PARTS CELLAR

dba Then & Now Automotive
447 Washington Street • Weymouth, MA 02188
781-335-8860 M-F 8 am to 5 pm
www.then-now.com

**KNOWN FOR OUR FUEL PUMP KITS, WE ALSO
SPECIALIZE IN MECHANICAL PARTS!**

Keep us in mind for all of your mechanical needs:

Obsolete & Modern

CHASSIS PARTS

**IGNITION PARTS, SPARK PLUGS, WIRE
HYDRAULICS, MASTER & WHEEL CYLINDERS
SHOCK ABSORBERS, 1930'S & UP
BRAKE SHOES, BOOSTERS, HARDWARE, ETC.
POWER STEERING COMPONENTS**

BELTS & HOSES

**CARBURETORS & CARB KITS
FOR 15 PAINT PRODUCTS
MANUALS**

and so much more. . .

**TELL US
WHAT
YOU NEED!**



GOOD YEAR MUSCLE



NUMBER 1
in Authenticity



Exclusive Distributor

P.O. Box 564
Camdenton, MO 65020
1-573-346-2506

Toll Free 1-800-325-0091
Toll Free FAX 1-800-845-7581
E-mail: kelsey@kelseytire.com

WWW.KELSEYTIRE.COM

Dealer Inquiries Encouraged.
No Buy-Ins Required.



Proudly made in
the U.S.A

RMT

ROSEWOOD MACHINE AND TOOL

Now offering replacement
1956-1964 Rambler Classic Six and
American Exhaust Manifolds!



1956-1964 (will fit 1965 with pipe
flange change). 196 cu. in.
overhead valve. Made from
stronger Class 30 cast iron.
Manifolds come with stainless
steel choke heat tube installed.

Only \$355.00

Website: www.rosewoodmachine.com
Phone: 937-362-3871

WHERE



Where can I find the red
round "guide" reflectors
that mount between the
top and bottom tail lights
on a 1953 Buick?

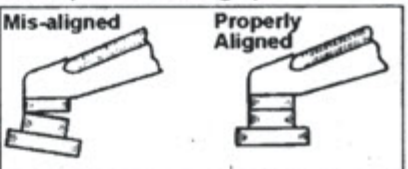


We found very nice repro-
ductions at "Taillight
King" for about \$20 a pair,
part # C5606.
Phone 936-524-6116

ASK DAVE

Q: Recently, I filed my points
on my 1949 Chevy 216
CID six. I used a point
file and ran a piece of
card stock between the point faces
to clean up the filings. I left the
distributor cap off to check the
point spark as my friend turned the
engine over. There is NO spark
from the points as the engine turns.
What have I done wrong?

A: The point arm and stand
are not aligned. The point
faces are not centered.
To fix it, with the key off,
use a mechanic's mirror
and screw driver and move the
point arm so that the point faces
are dead on and flat against each
other (not at an angle).



We sell new parts for Cadillac® & LaSalle™ 1936-early '70s

We are not a salvage yard

| | | | | | |
|---|--|--|--|--|--|
| <p>CRESTS 1940-60s Hood & trunk crests with bezels in chrome or gold, fender crests, interior trim crests.</p> | <p>LENSES '30s, '40s, '50s, '60s From obvious to the obscure. Taillight, backup, turn signal, foglight, courtesy, maplight, dome, reading light, door, license plate.</p> | <p>MEDALLIONS 1930s-1970s Hubcaps are a focal point of your Cadillac's design. And the center medallion is the most critical part. We have new medallions from the late '30s thru the '70s.</p> | <p>STAINLESS/CHROME SOMBREROS Medallions only</p> | <p>1950-'58 WINDSHIELD WASHER PUMP Restoration kits & service</p> | <p>DOOR MIRRORS 1937-1966 Treat yourself and your Cadillac or LaSalle to the finest mirrors available. We carry them all: left or right, convertible to 1960!</p> |
| <p>'V'S AND EMBLEMS With a name like McVey, we'd better have a great selection of perfect new 'V's and we do! In chrome or gold as per original.</p> | <p>DOORSILL PLATES Carpet is great, but without new sills, your interior just isn't finished. We have new sills for '30s-'60s.</p> | <p>SCRIPT & LETTERS '40s-'70s We may have the most complete inventory of new script and letters anywhere in the U.S.</p> | <p>1957 WHEEL COVERS Medallions only</p> | <p>1959 FRONT FENDER SPEARS ENGINE DECAL & DETAIL SETS 1936-1972</p> | <p>NEW: OIL BREATHER CAP 1950-62 Decals only</p> |
| <p>FUEL SENDERS 1940-1964</p> | <p>1956 EXHAUST PORT ASSEMBLY</p> | <p>EXHAUST INSULATION KITS Replace asbestos with efficient, modern, safe, show-winning wrap.</p> | <p>SABRE WHEEL & WIRE WHEEL HUBCAPS We have the world's finest in all three types: chrome, gold and 1957-style.</p> | <p>1948-'64 HOOD BUMPER SETS</p> | <p>1960 EYEBROW MOLDINGS New stainless sets with clips</p> |
| <p>INSIDE REARVIEW MIRRORS Brand new, for late 1930s-1970s</p> | <p>GEARSHIFT/TURN SIGNAL KNOBS & LEVERS Cadillacs/LaSalle 1938-1960</p> | <p>BATTERY BOXES 1941-1964 We stock a complete line of battery trays and holdowns.</p> | <p>CORRECT 'V' FAN BELTS 1940s-1960s</p> | <p>FRESH AIR-HEATER/DEFROSTER DUCT HOSE Many uses in Cadillacs from '30s-'60s. Comes in 2, 2 1/2, 3, 4, 4 1/2 and 5".</p> | <p>1960 EYEBROW MOLDINGS New stainless sets with clips</p> |

HOOD PARTS • ENGINE PARTS • BATTERY CABLES • GLOVEBOXES • PLUG WIRE KITS • RADIATOR & GAS CAPS • NOS PARTS • LITERATURE • HOOD BUMPERS
CARB KITS • BUJBS • HOSE CLAMP KITS • CHROME CLIPS • TRUNK LINING MATERIAL • SWITCHES • LIGHTERS • EXHAUST SYSTEMS • WIPER BLADES • TUNEUP KITS

JACK PODELL
FUEL INJECTION SPECIALIST

Your One Stop Fuel Injection Center
Complete Rebuilding • Parts
Rebuilt Units Available

106 Wakewa • South Bend, IN 46617
574-232-6430 • Fax: 574-234-8632
Email: podellsfi@aol.com

MIDWEST
REMANUFACTURING, LLC

5836 WEST 66TH ST. BEDFORD PARK, IL 60638
708-496-9100 FAX 708-496-9132

Quality Remanufactured

POWER BRAKE
Boosters • Hydro-Vac • Hydro-Boost

POWER STEERING
Pumps • Gearboxes • Control Valves • Cylinders

STATE FARM INSURANCE COMPANIES
HOME OFFICES: BLOOMINGTON, ILLINOIS

JIM LITTLE
Agent

6321-A E. Brainerd Rd. Chattanooga, TN 37421
PO Box 21543 Chattanooga, TN 37424

Bus: (423) 894-3839
Res: (423) 756-8572
Fax: (423) 499-9299

CELEBRATING 30 Years 1988-2018

ASK US ABOUT OUR CUSTOM SWITCHES

Watson's Street Works

INNOVATIVE PRODUCTS FOR TODAY'S CUSTOM BUILDER

watsonstreetworks.com

CHECK OUT SOME OF OUR OTHER GREAT PRODUCTS

1-866-859-0513

NEW 300 AMP BATTERY DISCONNECT

Contact Us For A Free Catalog

Speedometer Error?

TRANSMISSION

Correct your mechanical speedometer with our ratio adapter. To order, tell us your speedometer reading at a true speed. Install in 2 minutes. Call Ron any day or anytime.

727-410-6352
ROWAND SPEEDOMETER CO.
977 WOODGATE DR. PALM HARBOR, FL 34685

mention Southern Wheels

SH
CHROME PLATING
POWDER COATING

615-865-0100

Family owned for over 40 years!

817 Madison Industrial Rd • Madison, TN 37115
E-mail: shchrome@bellsouth.net

- All work done in-house
- All parts triple-plated
- Repair & restoration
- Complete buffing & Polishing shop
- Fabrication, sheet metal & Welding shop
- Lifetime Warranty

Specializing in Pot Metal

YOUR ONE STOP RESTORATION SHOP

LUTTY'S Chevy WAREHOUSE

Serving you for over 40 Years!

724-265-2988
sales@luttyschevy.com

RESTORATION PARTS FOR:

Camaro • Nova • Chevelle • El Camino

Truck • Tri 5 & Passenger Car

SHOP ONLINE AT LuttysChevy.com

BULLET RACING CAMS

Custom CNC Ground Cams

FULL RESTORATION OR CUSTOM STREET MACHINE

A CNC Custom Camshaft Is The Only Answer

4-Cylinder To 12-Cylinder • Flathead Or Overhead

CNC Ground To Your Specs

Dedicated Dependable Customer Service • Don't Settle For Less

Our Expertise & Experience Will Bring Life To Just About Any Motor

BULLET RACING CAMS Phone: 662-893-5670 • Fax: 662-893-6056 • Web: www.bulletcams.com
Address: 8785 Old Craft Road • Olive Branch, MS 38654

Kennedy American, Inc.

7100 State Route 142 SE
West Jefferson, Ohio 43162
613-879-7283 (SAVE)
info@kennedyamerican.com

American Motors

Largest selection of new factory original, reproduction, replacement and select used parts at a better price

AMC Nash Savelin

FOR A CUSTOM CATALOG OF PARTS JUST FOR YOUR AMC VISIT OUR WEBSITE:

www.kennedyamerican.com

AMC parts experience since 1974
We ship anywhere!
Visa/Mastercard/Discover/American Express

PNEUMATIC VALVE SPRING COMPRESSOR

WIN With MTD

mtiracingtools.com

•FAST
•SIMPLE
•DEPENDABLE

Over 1000 psi of compression regardless of inlet pressure.

•Made in U.S.A
•Precision CNC machined aluminum construction
•1 Year Warranty on parts & labor

303-963-6421

www.mtiracingtools.com

CHAMPION PRE-OWNED CLASSICS
SPECIALIZING IN TRUCKS AND COLLECTOR CARS

www.championclassics.com

| | | |
|---|--|--|
| <p>1968 Ford Mustang GT fastback, orig. 390 V8, 4 sp man. trans., CA-built, all orig body panels, etc., PS, PDB, aftermarket alloy wheels, some updates, but original parts go with car. \$125,500.</p> | <p>1950 Chevrolet 3100 short bed pickup, orig. 216 6 cyl eng, 4 sp man. trans w/granny gear, opt bumper guards, AM/FM radio, nice wood bed, high quality restoration, runs & drives good, \$39,500.</p> | <p>1949 Ford F-1 short bed pickup, correct flathead V8 eng., 3 sp man. trans on floor, super nice body, interior nicely redone to orig., really good paint, correct wheels, WWW tires, orig. grille, \$39,500.</p> |
| <p>1969 Camaro Rally Sport 1/2t. 350 alum. lead LT1 eng. Turbo 400 auto trans., 12 bolt posi rear, PS, PDB, factory a/c, buckets, console w/gauges, new dlx pearl white int., runs great, \$69,500.</p> | <p>1963 Ford Galaxie 500 XL Conv., 390 V8, 4 bbl carb, dual exh., 4 sp man. trans., PS, PB, P conv top, factory bucket seats, console mtd floor shift, high dollar cloth top, new rear window, \$42,500.</p> | <p>1964 Pontiac Catalina w/Ventura opts., 2 dr h/t, 39,000 actual mi, totally orig, unmolested Catalina w/orig 389 V8, dual exh, auto trans, PS, appears garage-kept, runs & drives exc., interior is orig. & outstanding! \$29,500.</p> |

CHAMPION PRE-OWNED CLASSICS
118 Amanda Court • Harpers Ferry WV 25425
304-725-1155

AMERICAN PARTS DEPOT

409 NORTH MAIN STREET
WEST MANCHESTER, OH 45382
AMC, RAMBLER, NASH, NEW, REPRO AND N.O.S.
192 PARTS CARS

537 page catalog on our website
WWW.AMERICANPARTSDEPOT.COM
937-678-7249

SPEND MORE ON YOUR RIDE AND LESS ON INSURANCE.

- ▶ Classic Car Insurance
- ▶ Competitive Rates
- ▶ Agreed Value
- ▶ Free Roadside Assistance**
- ▶ 20% Collection Discount
- ▶ Over 20 Years in Business

1-800-303-3518

Call Now!

** Free Roadside Assistance not available in NC and VA.

LaRue Classic Insurance ▶ Official Sponsor of the Somernites Cruise

LaRueClassics.com

JIM DYER

Chevy Classics

RESTORATION PARTS & ACCESSORIES

CAMARO • CHEVELLE • EL CAMINO • NOVA • MONTE CARLO

NEW

- Carpet
- Door Panels
- Seat Covers
- Moldings

USED

- Weatherstrips
- Camaro & Chevelle Consoles
- Body Panels
- Emblems

REPRO

- Decals
- Grilles
- Bumpers
- Spoilers

1965-1972 Chevelle
Front Fenders
1966-1972 Chevelle & E. C.
SS/Cowl Hoods

1965 Chevelle/E.C.
"New Tooling"
Grilles
1970-1972 Chevelle SS Dashes

209-941-2112 • Fax 209-941-0527

3632 Duck Creek Dr. Bldg. E • Stockton, CA 95215

www.JimDyerChevyClassics.com • chevy-classics@sbcglobal.net

MagnaFuel

MagnaFuel Inc.
5015 Galley Road
Colorado Springs, CO 80915
Tech 719-532-1897 Orders 1-800-321-7761
Website: www.magnafuel.com
Home of World Champion
NHRA & IHRA Pro Stock Teams

Damper Doctor

Rebuilt and Replacement
Dampers
Drive Shaft
Supports



1055 Parkview Ave., Redding, CA 96001
888-834-2137 • Fax: 530-246-2987
or email damperdoc@aol.com

The Champion's Choice

Pro Glass

LEXAN RACING WINDOWS
630-553-3141
FAX: 630-553-3144
9318 CORNELIS RD., BRISTOL, IL 60512
www.proglasswindows.com

T&D...builds for all platforms

- Small Block • Big Block • Big Bore Space • Hemi • OEM & Aftermarket •
- Aluminum • Steel • Chevy • Ford • Mopar • Pontiac • Oldsmobile •
- Cadillac • AMC • LS • Custom • Lots More •



Good engine builders know the depth of available shaft-mount roller rockers in T&D Machine inventory. Over the years, T&D has engineered systems for virtually every pushrod engine available. Just ask someone who runs them, ask the sales department or head for the T&D website.

T&D is known for: Higher grade components than industry standards • Internal oiling to tip and trunion bearings • Larger shafts, bearings, adjusters and jam nuts • Options include ratio, offset, needle bearing tips, trunion bearings or bushings, spring oilers, aluminum or steel rocker bodies • Great customer service

Send \$3 for the latest T&D catalog



4869 Convair Drive, Carson City, NV 89706

(775) 884-2292 • www.tdmach.com

America's Convertible Headquarters Since 1976



Convertible Hydraulics

For U.S. convertibles 1946+
Top Cylinders Start at \$119
Hose Sets Start at \$89
Motor Pumps 1955+ Start at \$349

Re-build Service available:

Firewall Pump, Bakelite Valve, Window Switches, Tops switches and much more. ALSO Rebuilding available for many pumps and cylinders for 1990+ U.S. and overseas convertible models.

Call (941) 639-0437



Convertible Weather Strip, Beltline Window Felt available

Call (941)-639-0437



Convertible Top Parts

Header Bows & Tack Bows
Top Latches
Top Switches
Hold Down Cables

Hydro-E-Lectric

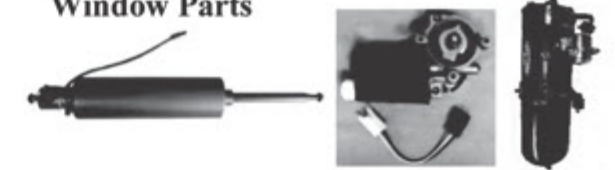
Convertible Tops

US Cars 1946+ & Many Import Cars
Available In Vinyl & Canvas

1971-76 Full Size GM Cars

Top Motor, Relays, Drive Cables, 2nd Bow, Ball Joints, Rear Glass Window Brackets, Latches, Hold Down Cables, Rain Gutter, Well Liner

Window Parts



Hydraulic Pump Rebuild 1946-54 \$450
GM Window Motor 1959+ \$99ea.; \$188/pr.
Window Switches: Call for Availability

Accessory Items

Mirrors, Interior & Exterior
Lock Sets
Carpet Sets
Wheel Well Moldings
Sill & Scuff Plates



941-639-0437

5530 Independence Court
Punta Gorda, FL 33982

www.Hydroe.com